

HIGH - END KITCHEN & WARDROBE

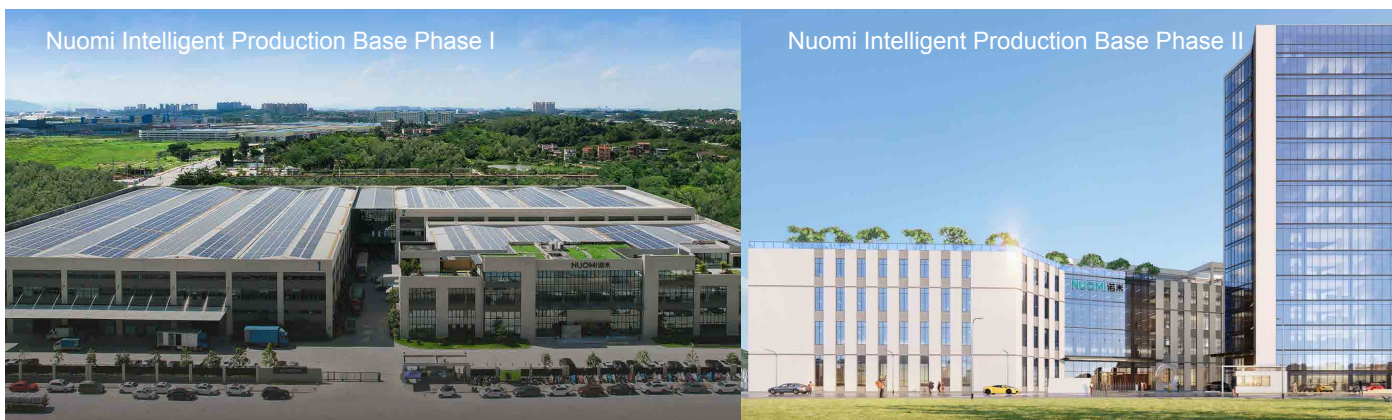
NUOMI

Minimalist Luxury Design Solution

- Premium Quality
- Functional Design
- User Friendly
- Minimalist
- Easy Installation



ABOUT US



NUOMI, founded in 2003 and is a high-tech enterprise that integrates research and development, design, production, and sales.

As one of China's leading high-end home hardware brands, NUOMI pioneered and practices the concept of "whole-house hardware ecological chain." It uses the "four-same" concept of the same style, same color, same quality, and same brand to achieve design upgrades in hardware aesthetics and has fully laid out seven major product systems, including "kitchen storage solutions, wardrobe storage solutions, kitchen sink, furniture motion solutions, smart lighting system, high-end custom aluminum application system and high-end door lock solution."

Over the years, NUOMI has gathered global research and development intelligence and launched many innovative technologies and hardware solutions. It currently holds more than 250 innovative design invention patents and has obtained international authoritative quality certification such as the UK Crown ISO9001, Swiss SGS, and German TOV for its products. With the transformation of Industry 4.0 intelligent manufacturing, NUOMI took the lead in building on 80,000 square meter (Phase I) and 63,000 square meter (Phase II) intelligent production base in the industry, equipped with intelligent robots, automation equipment, and unmanned storage systems. It uses technology to empower the flexible and precise production of hardware, comprehensively improving delivery capabilities and winning many honors such as "National High-tech Enterprise," "National Invisible Champion of Manufacturing Industry," and "Benchmark Brand of Home Furnishing Intelligent Manufacturing."

Through comprehensive capacity building, NUOMI has become one of the few high-end whole-house hardware service providers in the industry that can provide one-stop, integrated matching solutions. As of now, NUOMI, which is facing the global market, has become a major supplier to many cabinet and wardrobe brands and home furnishing brands worldwide, with business covering more than 70 countries and regions around the world. In the Chinese market, NUOMI has established strategic cooperation with top-listed home furnishing brands, and its sales network has more than 200 dealers and agents, making it one of the leading brands in the industry.

NUOMI INNOVATION

01 INTRODUCTION

HIGH-END CUSTOM HARDWARE REDEFINING HOME LIVING

NUOMI MISSION:
Make your home life more tasteful

NUOMI VISION:
Become a world-class brand in home hardware

70+
Best-selling countries and regions

200+
Sales service outlets

380
Domestic and foreign home brand partners

02 INNOVATIVE & INTELLIGENT

7 MAJOR CATEGORIES
Integrated hardware solutions for whole house

250 ITEMS
Innovative design patents

4.0 DIGITAL INTELLIGENCE
International industry 4.0 digital intelligence production base

**COMMITTED TO QUALITY
FOCUSED ON EVERY DETAIL**

0.01
Precision control within 0.01cm

3
ISO, SGS, TUV certified

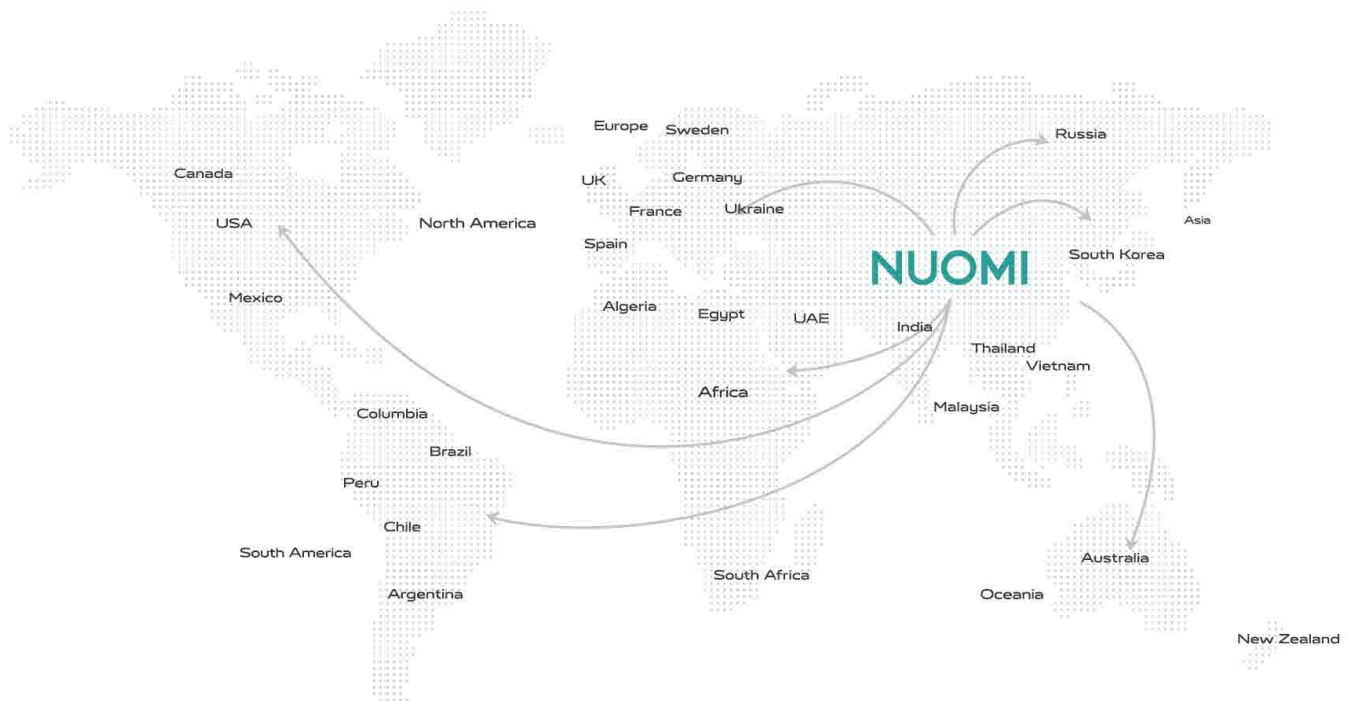
168
Nano dry plating technology with
168-hour salt spray test

80000
Slides pass SGS 80000 cycle tests



SALES NETWORK

NUOMI is a global brand. With a globalized service system, NUOMI has long provided hardware solutions for hundreds of international kitchen cabinet and home furnishing brands. Its products are sold in more than 70 countries and regions around the world, including Asia, Europe, and North America, and have a leading position in the international high-end market.



CERTIFICATES and AWARDS

Was rated as "Top Ten Brands in the Hardware Industry" for three consecutive years from 2014 to 2016
 Won the national "high-tech enterprise certificate" in 2019
 Was rated as "Top 100 Chinese Home Furnishing Supply Chain Companies" by the China Furniture & Decoration Chamber of Commerce in 2021
 Was rated as "Strategic Partner" by China Furniture & Decoration Chamber of Commerce in 2021
 Named the National Invisible Champion of Nanhai Manufacturing Industry in 2022
 Won the "Benchmark Brand of Smart Home Manufacturing", "Design Innovation Award", and "Technology Leadership Award" in 2022
 Selected as a Specialized and Innovative New Enterprise in Foshan in 2022
 Identified as Foshan High-end Customization of Whole House Hardware (Nuomi Home) Engineering Research Center in 2022
 BULLET wingless hinge series wins 2023 FDA Gold Award in Home Hardware - The Sole Recipient in **Their Field**
 ENCANTO Series Pull-Out Basket receives 2023 FDA French Design Award
 Best Integrated Component Award for Door-Wall-Cabinet Industry in 2023
 EFFIE series wardrobe storage hardware won the 2024 CD Awards Extreme Award
 ZEUS cob series smart lighting won the 2024 CD Awards Finalist Award



ENCANTO series
2023 French Design Award



BULLET wingless hinge series
2023 FDA Gold Award



BULLET wingless hinge series
2023 MUSE Design Awards Gold Winner



EFFIE series CD Awards
2024 Extreme Award



ZEUS cob series
2024 CD Awards, Finalist Award



2022 Home Smart Manufacturing Leader
Technical Pioneer, Design Innovator



H-tech Corporate Certificate



ISO9001 Quality Management
System Certification



TÜV Quality Testing Certification



SGS Quality Testing Certification

KITCHEN STORAGE SOLUTIONS



Rotatable Multi-functional Pantry



Combining advanced engineering and premium materials, this hardware solution seamlessly merges functionality with practicality. Its slim-sided construction and non-slip base create a high-performance system for storing various kitchen items while maintaining a sleek, modern aesthetic.

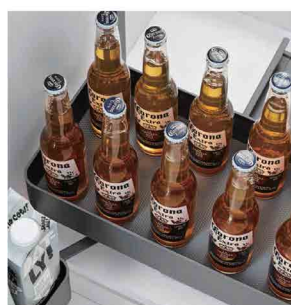


ITEM	ITEM NO.	DESCRIPTION	Cabinet outside width (3/4"board)		Cabinet outside width (5/8"board)		SPECIFICATION (WxDxH)
			INCH	MM	INCH	MM	
FRAME	202006D	Highclass Grey ●	23 5/8	600	23 7/16	596	555x500x(1780 above) mm
BASKET	2020219	Highclass Grey ●	23 5/8	600	23 7/16	596	555x500x(1780 above) mm

Roll-out Pantry

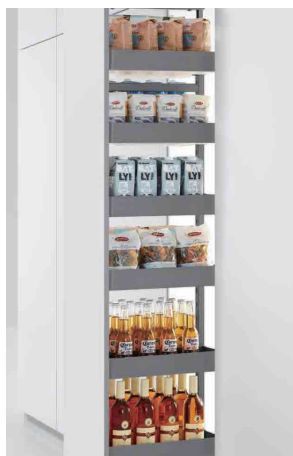


Incorporating German-engineered, super load-bearing roller rails and a novel linkage mechanism, this advanced system smoothly extends inner gaskets while protecting cabinet doors. Aviation-grade aluminum and steel components ensure rust-resistant durability, offered in Champagne Gold or Highclass Grey with a non-slip mat.



ITEM	ITEM NO.	DESCRIPTION	Cabinet outside width (3/4"board)		Cabinet outside width (5/8"board)		SPECIFICATION (WxDxH)
			INCH	MM	INCH	MM	
FRAME	2020003B	Highclass Grey ●	17 11/16	450	17 9/16	446	405x500x(1780 above) mm
BASKET	2020183	Highclass Grey ●	17 11/16	450	17 9/16	446	405x500x(1780 above) mm
FRAME	2020006B	Highclass Grey ●	23 5/8	600	23 7/16	596	555x500x(1780 above) mm
BASKET	2020186	Highclass Grey ●	23 5/8	600	23 7/16	596	555x500x(1780 above) mm

Soft-Close Tall Unit



Engineered with German technology, this high-capacity kitchen system features super load-bearing damping rails with synchronized upper and lower guide rails for smooth, stable operation. Its 180° rotatable basket height is easily adjustable, while premium aluminum alloy and steel construction ensure rust and abrasion resistance.

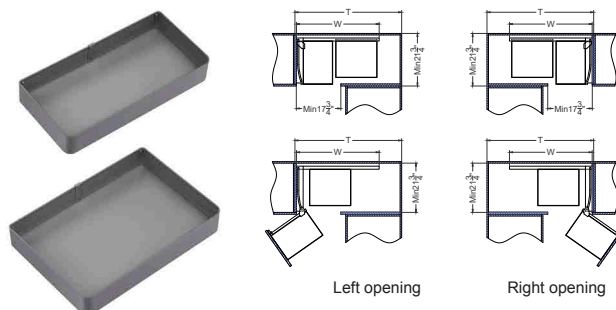


ITEM	ITEM NO.	DESCRIPTION	Cabinet outside width (3/4"board)		Cabinet outside width (5/8"board)		SPECIFICATION (WxDxH)
			INCH	MM	INCH	MM	
FRAME	2010003B	Highclass Grey ●	11 13/16	300	11 5/8	296	250x460x(1780-2080) mm
BASKET	2010183	Highclass Grey ●	11 13/16	300	11 5/8	296	250x460x(1780-2080) mm
SLIDE	2010007B	Highclass Grey ●	11 13/16	300	11 5/8	296	250x460x(1780-2080) mm
FRAME	2010003B	Highclass Grey ●	15 3/4	400	15 9/16	396	350x460x(1780-2080) mm
BASKET	2010186	Highclass Grey ●	15 3/4	400	15 9/16	396	350x460x(1780-2080) mm
SLIDE	2010008B	Highclass Grey ●	15 3/4	400	15 9/16	396	350x460x(1780-2080) mm

Encanto Magic Corner



Make full use of the corner space, separated linkage structure and full pull-out design, greatly facilitating storage. It can be installed in both left and right corner openings.



ITEM	ITEM NO.	DESCRIPTION		SPECIFICATION (WxDxH)	CABINET WIDTH (T)
FRAME (Left)	1010001B	Highclass Grey ●		(860-960)x530x520mm	900-1000 mm
FRAME (Right)	1010002B	Highclass Grey ●		(860-960)x530x520mm	900-1000 mm
BASKET (Left)	1010180	Highclass Grey ●		(860-960)x530x520mm	900-1000 mm
BASKET (Right)	1010180	Highclass Grey ●		(860-960)x530x520mm	900-1000 mm

Encanto Universal Magic Corner



Make full use of the corner space, separated linkage structure and full pull-out design, greatly facilitating storage. It can be installed in both left and right corner openings.

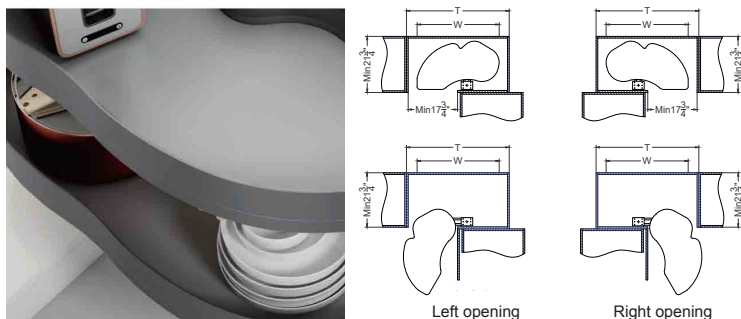
ITEM	ITEM NO.	DESCRIPTION	Cabinet outside width (3/4" board)		Cabinet outside width (5/8" board)		SPECIFICATION (WxDxH)
			INCH	MM	INCH	MM	
FRAME	318BC0001	Highclass Grey ●	31 1/2	800	31 5/16	796	620x485x559mm
BASKET	318BC1807	Highclass Grey ●	31 1/2	800	31 5/16	796	620x485x559mm

Encanto Revolving Saucer



Fashionable artistic design, constantly evolving production techniques, and hidden practical function.

Make full use of the corner space, separated linkage structure and full pull-out design, greatly facilitating storage. It can be installed in both left and right corner openings.



ITEM	ITEM NO.	DESCRIPTION	SPECIFICATION (WxDxH)	CABINET WIDTH (T)
Left Open	1020071	Highclass Grey ●	828 x 500 x (620-720) mm	900-1000 mm
Right Open	1020072	Highclass Grey ●	828 x 500 x (620-720) mm	900-1000 mm

Multifunctional Basket with Slidable Cutlery Tray



Basket for base cabinet, proper space partition design, satisfy the needs of storing different sizes of utensils, making the kitchen storage neat and orderly.

The whole basket is made of superior aviation aluminium alloy, advanced fluorocarbon surface treatment technology, strong corrosion resistance, rust-resistance, abrasive-resistance. The guide rail passed the European standard SGS 80000 cycle movement test.

The bottom is covered by non-slip mat, which prevents the items from collision, and convenient to clean at the same time.



ITEM NO.	DESCRIPTION	Cabinet outside width (3/4"board)		Cabinet outside width (5/8"board)		SPECIFICATION (WxDxH)
		INCH	MM	INCH	MM	
3186007	Highclass Grey ●	23 5/8	600	23 7/16	596	(564-568)x471x226 mm
3187007	Highclass Grey ●	27 9/16	700	27 3/8	696	(664-668)x471x226 mm
3187507	Highclass Grey ●	29 1/2	750	29 3/8	746	(714-718)x471x226 mm
3188007	Highclass Grey ●	31 1/2	800	31 5/16	796	(764-768)x471x226 mm
3189007	Highclass Grey ●	35 7/16	900	35 1/4	896	(864-868)x471x226 mm

Pull-out Basket with Slidable Cutlery Tray



Basket for base cabinet, proper space partition design, satisfy the needs of storing different sizes of utensils, making the kitchen storage neat and orderly.

The whole basket is made of superior aviation aluminium alloy, advanced fluorocarbon surface treatment technology, strong corrosion resistance, rust-resistance, abrasive-resistance. The guide rail passed the European standard SGS 80000 cycle movement test.

The bottom is covered by non-slip mat, which prevents the items from collision, and convenient to clean at the same time.



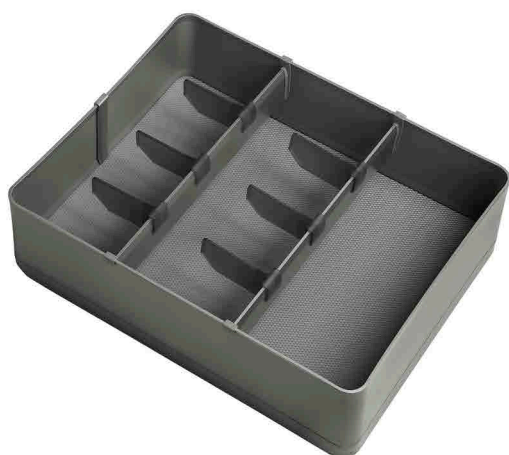
ITEM NO.	DESCRIPTION	Cabinet outside width (3/4"board)		Cabinet outside width (5/8"board)		SPECIFICATION (WxDxH)
		INCH	MM	INCH	MM	
3186008	Highclass Grey ●	23 5/8	600	23 7/16	596	(564-568)x471x226 mm
3188008	Highclass Grey ●	31 1/2	800	31 5/16	796	(764-768)x471x226 mm
3189008	Highclass Grey ●	35 7/16	900	35 1/4	896	(864-868)x471x226 mm

Push-Open High Pull-out Basket For Cookware



ITEM NO.	DESCRIPTION	Cabinet outside width (3/4"board)		Cabinet outside width (5/8"board)		SPECIFICATION (WxDxH)
		INCH	MM	INCH	MM	
3186028	Highclass Grey ●	23 5/8	600	23 7/16	596	564x471x226mm
3188028	Highclass Grey ●	31 1/2	800	31 5/16	796	764x471x226mm
3189028	Highclass Grey ●	35 7/16	900	35 1/4	896	864x471x226mm

Ultra Slim Drawer Box



ITEM NO.	DESCRIPTION	Cabinet outside width (3/4"board)		Cabinet outside width (5/8"board)		SPECIFICATION (WxDxH)
		INCH	MM	INCH	MM	
3186017	Highclass Grey ●	23 5/8	600	23 7/16	596	564x457x103mm
3186018	Highclass Grey ●	23 5/8	600	23 7/16	596	564x457x151mm



Inner Pull-out Basket for Cutlery Tray



Basket for base cabinet, proper space partition design, satisfy the needs of storing different sizes of utensils, making the kitchen storage neat and orderly.

The whole basket is made of superior aviation aluminium alloy, advanced fluorocarbon surface treatment technology, strong corrosion resistance, rust resistance, abrasive resistance. The guide rail passed the European standard SGS 80000 cycle movement test.

The bottom is covered by non-slip mat, preventing the items from colliding, and is convenient to clean at the same time.

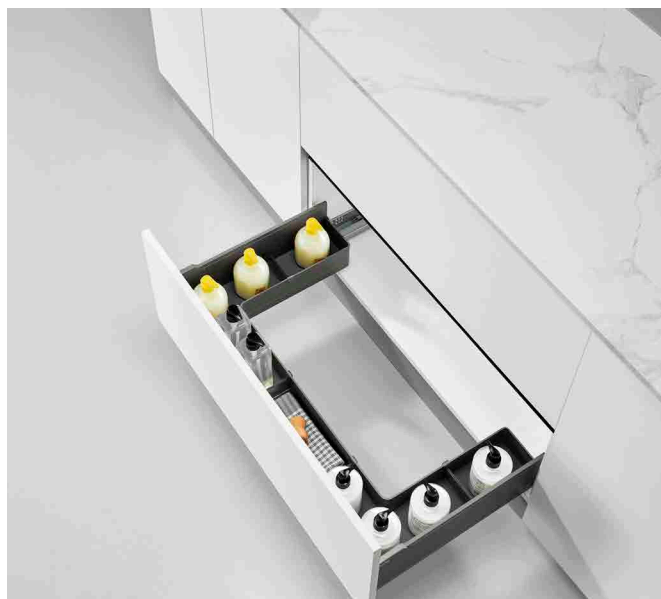


ITEM NO.	DESCRIPTION	Cabinet outside width (3/4"board)		Cabinet outside width (5/8"board)		SPECIFICATION (WxDxH)
		INCH	MM	INCH	MM	
3186016	Highclass Grey ●	23 5/8	600	23 7/16	596	(564-568)x423x85 mm
3187016	Highclass Grey ●	27 9/16	700	27 6/16	696	(664-668)x423x85 mm
3187516	Highclass Grey ●	29 1/2	750	29 3/8	746	(714-718)x423x85 mm
3188016	Highclass Grey ●	31 1/2	800	31 5/16	796	(764-768)x423x85 mm
3189016	Highclass Grey ●	35 7/16	900	35 1/4	896	(864-868)x423x85 mm

Miele



U-shaped Basket Under Sink



Basket for base cabinet, proper space partition design, satisfy the needs of storing different sizes of utensils, making the kitchen storage neat and orderly.

The whole basket is made of superior aviation aluminium alloy, advanced fluorocarbon surface treatment technology, strong corrosion resistance, rust resistance, abrasive resistance. The guide rail passed the European standard SGS 80000 cycle movement test.

The bottom is covered by non-slip mat, preventing the items from colliding, and is convenient to clean at the same time.



ITEM NO.	DESCRIPTION	Cabinet outside width (3/4"board)		Cabinet outside width (5/8"board)		SPECIFICATION (WxDxH)
		INCH	MM	INCH	MM	
3189005	Highclass Grey ●	35 7/16	900	35 1/4	896	(864-868)x471x162 mm

Pull-out Seasoning Basket with Slidable Drawer



The pull-out basket efficiently organizes bottles, condiments, and other daily items in a base cabinet. Constructed from rust and abrasion-resistant aluminum with SGS-certified rails. A slim, non-slip design, sliding cutlery tray, and moveable spice rack enhance functionality and convenience.



ITEM NO.	DESCRIPTION	Cabinet outside width (3/4"board)		Cabinet outside width (5/8"board)		SPECIFICATION (WxDxH)
		INCH	MM	INCH	MM	
3184001	Highclass Grey ●	15 3/4	400	15 9/16	396	364x471x552 mm
3184501	Highclass Grey ●	17 11/16	450	17 9/16	446	414x471x552 mm

Revolving Tall Unit



The unique linked design allows all the baskets to be pulled out at the same time when the door is opened, making it convenient for storing items. The silent design ensures the product remains steady and smooth during the opening and closing process. The double rail design improves upon the previous single rail model, ensuring smooth and steady movement when pulled out.



ITEM	ITEM NO.	DESCRIPTION	Cabinet outside width (3/4" board)		Cabinet outside width (5/8" board)		SPECIFICATION (WxDxH)
			INCH	MM	INCH	MM	
FRAME	2010003B	180 revolving	11 13/16	300	11 5/8	296	250x460x(1780-2080) mm
BASKET	2010073A	180 revolving	11 13/16	300	11 5/8	296	250x460x(1780-2080) mm
SLIDE	2010007B	180 revolving	11 13/16	300	11 5/8	296	250x460x(1780-2080) mm
FRAME	2010003B	180 revolving	15 3/4	400	15 9/16	396	350x460x(1780-2080) mm
BASKET	2010076A	180 revolving	15 3/4	400	15 9/16	396	350x460x(1780-2080) mm
SLIDE	2010008B	180 revolving	15 3/4	400	15 9/16	396	350x460x(1780-2080) mm

Electric Lifting Unit

AVIATION-GRADE ALUMINUM ALLOY

Aviation-grade aluminum alloy material, ultra-narrow frame, lightweight, durable, and resistant to rust, maximized space utilization.

FLUOROCARBON COATING

Environmental protection, health and comfort, while increasing the corrosion resistance, frost resistance and fade resistance of aluminum.

HIDDEN SLIDING STRUCTURE

Smooth and silent operation. Pass SGS 20000 cycle movement test.

INNOVATIVE DC MAGNETIC MOTOR

DC magnetic motor, low noise operation, stable lifting, power saving, energy saving, stable operation, long life, low noise; Power short circuit overload protection.

SMART START WITH BUTTON E

Smart button E allows for easy operation of the up/ down/pause functions during the cooking process, making full use of kitchen space. The height adjustment is controlled at will, with automatic stopping upon encountering obstacles. No need to climb to reach items, making it easy for both the elderly and children to use.

ANTI-PINCH DEVICE

During operation, it automatically reverses when encountering an obstruction to prevent pinching, ensuring safe use for family members.

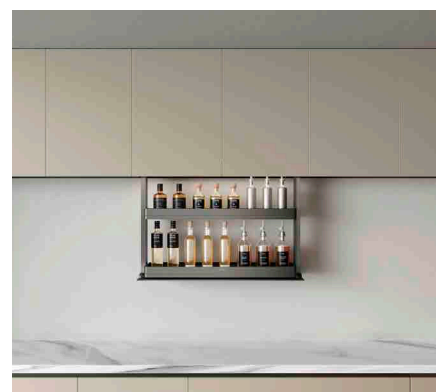
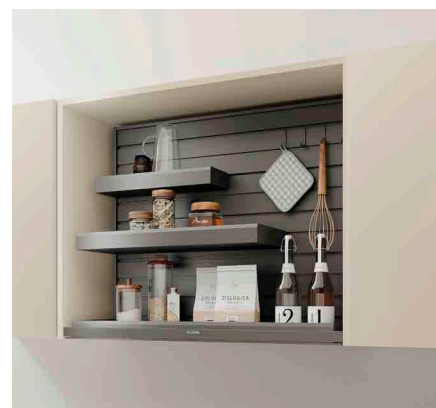
CUSTOMIZED STORAGE

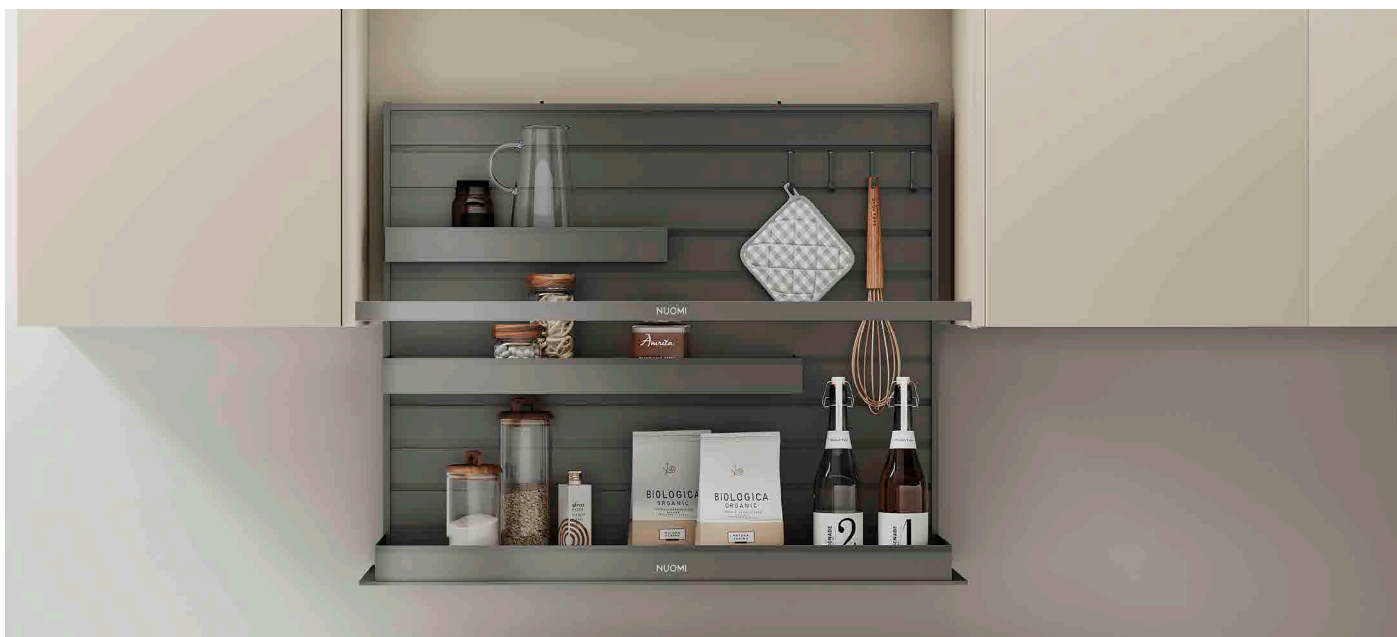
Self-defined partition scientific storage, and randomly place storage tanks, cans, condiments, knives and chopsticks, and kitchen utensils according to personal habits;

Removable storage module makes cleaning and taking more convenient.

LOAD CAPACITY

Max loading :21KG





ITEM NO.	DESCRIPTION	Cabinet outside width (3/4"board)		Cabinet outside width (5/8"board)		SPECIFICATION (WxDxH)
		INCH	MM	INCH	MM	
S2018001	Highclass Grey ●	31 1/2	800	31 5/16	796	754x308x688mm
S2019001	Highclass Grey ●	35 7/16	900	35 1/4	896	854x308x688mm

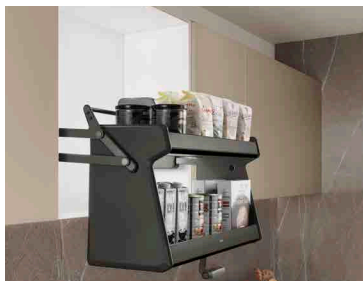


ITEM NO.	DESCRIPTION	Cabinet outside width (3/4"board)		Cabinet outside width (5/8"board)		SPECIFICATION (WxDxH)
		INCH	MM	INCH	MM	
S2016002	Highclass Grey ●	23 5/8	600	23 7/16	596	564x287x702mm
S2017002	Highclass Grey ●	27 9/16	700	27 3/8	696	664x287x702mm
S2018002	Highclass Grey ●	31 1/2	800	31 5/16	796	764x287x702mm
S2019002	Highclass Grey ●	35 7/16	900	35 1/4	896	864x287x702mm

Double Layer Lifter



Liftable design, make the best use of higher space. Humanized design, adjust pull and resilience force according to loading weight, make the usage more safe and comfortable.



ITEM NO.	DESCRIPTION	Cabinet outside width (3/4"board)		Cabinet outside width (5/8"board)		SPECIFICATION (WxDxH)
		INCH	MM	INCH	MM	
4186005	Highclass Grey ●	23 5/8	600	23 7/16	596	564 x 294 x 452 mm
4187005	Highclass Grey ●	27 9/16	700	27 6/16	696	664 x 294 x 452 mm
4188005	Highclass Grey ●	31 1/2	800	31 5/16	796	764 x 294 x 452 mm
4189005	Highclass Grey ●	35 7/16	900	35 1/4	896	864 x 294 x 452 mm

Side Basket Attached Door Under Sink



Suitable for storing bottles, cleaning tools, pads, etc. It is equipped with a push-pull box and a reasonable layout to maximize the use of space to meet all your storage needs.

The assembly of components is perfect and meticulous, the overall structure is stable, easy to install; Bottom is covered vandyck brown leather, paired with highclass grey metal frame.



ITEM NO.	DESCRIPTION	Cabinet outside width (3/4"board)		Cabinet outside width (5/8"board)		SPECIFICATION (WxDxH)
		INCH	MM	INCH	MM	
3182006	Highclass Grey ●	17 11/16	450	17 9/16	446	382x176x530 mm
3182007	Highclass Grey ●	23 5/8	600	23 7/16	596	555x176x530 mm

Waste Container



Dark Grey plastic waste container, adjustable sizing that can conveniently fit in the cabinet.

ITEM NO.	DESCRIPTION	Cabinet outside width (3/4" board)		Cabinet outside width (5/8" board)		SPECIFICATION (WxDxH)
		INCH	MM	INCH	MM	
3090003	Dark Grey (Without Door Panel)	11 13/16	300	11 5/8	296	250x455x355mm
3090004	Dark Grey (With Door Panel)	11 13/16	300	11 5/8	296	250x455x355mm

Waste Container Under Sink

Grey plastic waste container, adjustable sizing that can conveniently fit in the cabinet.



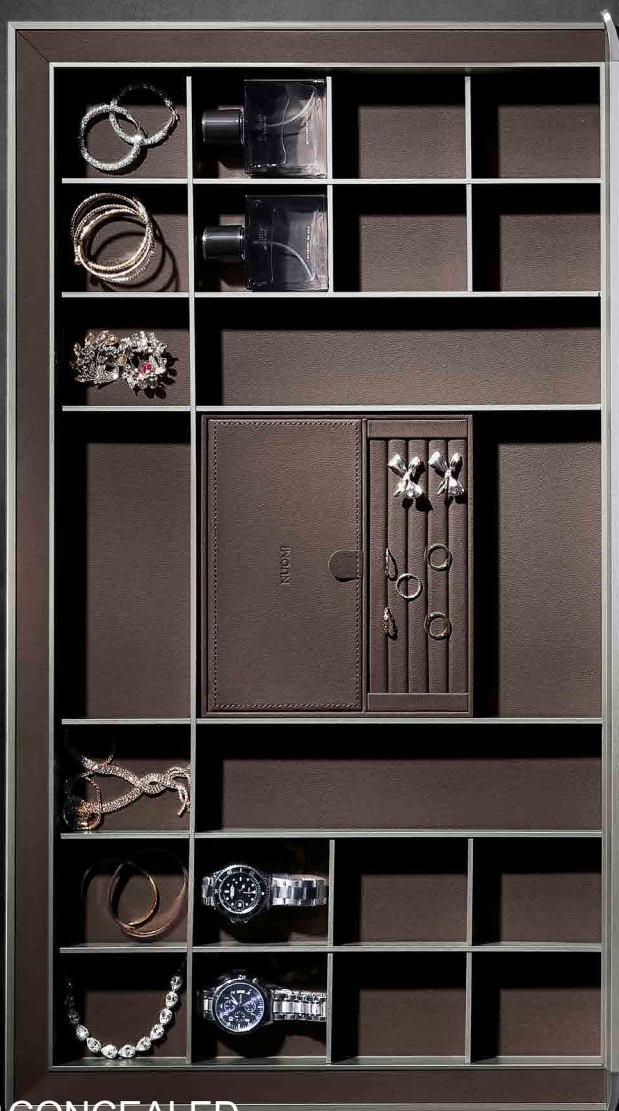
ITEM NO.	DESCRIPTION	SPECIFICATION (WxDxH)
3090006	Grey	370x270x320 mm

HERA SERIES

Rich textured materials in a sleek style, together with built-in ambient lighting, brings a sense of modern elegance and luxury.

MINIMALIST EDGES
AND CORNERS

DIFFERENT MATERIAL
PRESENTS UNIQUE
AESTHETIC



HURMAR CONCEALED
SLIDE SEAMLESS
DESIGN

CONVENIENT
ASSEMBLY AND
INSTALLATION

REVOLUTIONARY
SURFACE
TREATMENT



Soft-Close Leather Basket



Suitable for storing clothes, trousers, towels, etc. Large opening visual design, load capacity up to 25kg, meeting the storage needs of heavy clothes.

The assembly of components is perfect and meticulous, The basket body is made of high-grade waterproof leather, resistant to moisture and corrosion, and has no risk of deformation.

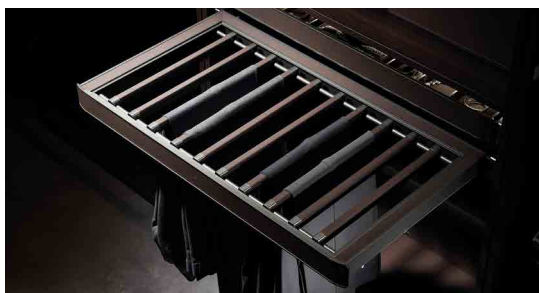
ITEM NO.	Cabinet outside width (3/4"board)		Cabinet outside width (5/8"board)		SPECIFICATION (WxDxH)
	INCH	MM	INCH	MM	
6180260	23 5/8	600	23 7/16	596	564x 470x207 mm
6180270	27 9/16	700	27 3/8	696	664x 470x207 mm
6180280	31 1/2	800	31 5/16	796	764x 470x207 mm
6180290	35 7/16	900	35 1/4	896	864x470x207 mm
6180210	39 3/8	1000	39 3/16	996	964x470x207 mm

Soft-Close Trousers Rack



Suitable for storing trousers. Trouser hangers prevent wrinkles. Snap-on terminal are easy to remove and replace.

The assembly of components is perfect and meticulous, The aluminum alloy pant hangers are fully covered with leather, providing ultimate care for delicate trousers.



ITEM NO.	Cabinet outside width (3/4"board)		Cabinet outside width (5/8"board)		SPECIFICATION (WxDxH)
	INCH	MM	INCH	MM	
6180460	23 5/8	600	23 7/16	596	564x470x62 mm
6180470	27 9/16	700	27 3/8	696	664x470x62 mm
6180480	31 1/2	800	31 5/16	796	764x470x62 mm
6180490	35 7/16	900	35 1/4	896	864x470x62 mm
6180410	39 3/8	1000	39 3/16	996	964x470x62 mm

Soft-Close Accessory Shelf

Suitable for storing glasses, belts, etc. Maximize the use of space to meet all jewelry storage needs.

The assembly of components is perfect and meticulous. The overall structure is stable, and easy to install; Bottom covered vandyck brown leather, is paired with a highclass grey metal frame.



ITEM NO.	Cabinet outside width (3/4"board)		Cabinet outside width (5/8"board)		SPECIFICATION (WxDxH)
	INCH	MM	INCH	MM	
6180360	23 5/8	600	23 7/16	596	564x470x72 mm
6180370	27 9/16	700	27 3/8	696	664x470x72 mm
6180380	31 1/2	800	31 5/16	796	764x470x72 mm
6180390	35 7/16	900	35 1/4	896	864x470x72 mm
6180310	39 3/8	1000	39 3/16	996	964x470x72 mm

Electric Control Liftable Hanger

Suitable for storing jackets, coats, dresses, etc. Hover in any direction from 0-88°, convenient and easy to pick up items. The width is adjustable, suitable for 800-1200mm cabinets, and the maximum load-bearing capacity is 15kg.

Electric lifting design makes full use of the higher space of the wardrobe. The horizontal bar is fully wrapped in leather. The assembly of components is perfect and meticulous. The overall structure is stable, and easy to install.



ITEM NO.	SPECIFICATION (WxDxH)
6181601	(764-1164)x140x881 mm

Soft-Close Lifiable Hanger



Suitable for storing jackets, coats, dresses, etc. The design makes full use of the wardrobe's higher space, easy access to items. The horizontal bar is fully wrapped in leather. The assembly of components is perfect and meticulous. The overall structure is stable, easy to install.

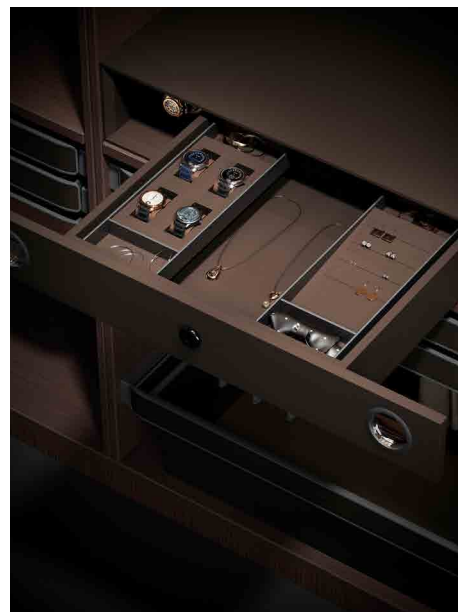


ITEM NO.	SPECIFICATION (WxDxH)
6181606	(564-764)x148x860 mm
6181607	(764-1064)x148x860 mm

Safe Storage

A state-of-the-art secure storage solution engineered to protect your most valuable assets. Equipped with advanced biometric authentication and real-time monitoring features.

It provides unmatched security and peace of mind.



ITEM NO.	SPECIFICATION (WxDxH)
6185390	860x440x192 mm
6185310	960x440x192 mm

Hanging Rod



6183100

Covered with anti-slip strips. Side installation + top installation + 90° corner, 3 application methods with diverse functions.

The metal frame is covered in vandyck brown leather.



6183101



6183102

ITEM NO.	DESCRIPTION	SPECIFICATION (WxDxH)
6183100	Highclass Grey Aluminium	2000 mm
6183101	Highclass Grey Zinc	-
6183102	Highclass Grey Zinc	-

Soft-Close Accessory Shelf



Suitable for storing squares, belts, etc. it is equipped with a push-pull jewelry box and a reasonable layout to maximize the use of the wardrobe's higher space to meet all jewelry storage needs.

The assembly of components is perfect and meticulous, the overall structure is stable, easy to install; Bottom covered vandyck brown leather, paired with highclass grey metal frame.



ITEM NO.	Cabinet outside width (3/4"board)		Cabinet outside width (5/8"board)		SPECIFICATION (WxDxH)
	INCH	MM	INCH	MM	
6180660	23 5/8	600	23 7/16	596	564 x 470 x 62 mm
6180670	27 9/16	700	27 3/8	696	664 x 470 x 62 mm
6180680	31 1/2	800	31 5/16	796	764 x 470 x 62 mm
6180690	35 7/16	900	35 1/4	896	864 x 470 x 62 mm
6180610	39 3/8	1000	39 3/16	996	964 x 470 x 62 mm

VIOLET SERIES

Ultra-luxury with unmatched design standards creates an unparalleled wardrobe aesthetic.

EXTRAORDINARY
ELEGANCE

SOFT TOUCH
VELVET

HURMAR CON-
CEALED DAMPING
SLIDE

INNOVATIVE
STRETCHABLE
FRAME DESIGN

REVOLUTIONARY
SURFACE
TREATMENT

INNOVATIVE
INTEGRATED
FRAME DESIGN



Soft-Close Rattan Basket



Suitable for storing clothes, trousers, towels, etc. With dampening guide rail, which makes it smooth, stable and quiet. The frame structure has a telescopic adjustment of 100mm.

Perfect and meticulous installation of components, stable overall structure, easy installation. Fluorocarbon gold coating, strong adaptability, fashion and elegant.

ITEM NO.	SPECIFICATION (WxDxH)	Applicative Inner Width
6050260S	564x480x200 mm	562 - 664 mm
6050270S	664x480x200 mm	662 - 764 mm
6050280S	764x480x200 mm	762 - 864 mm
6050290S	864x480x200 mm	862 - 964 mm

Soft-Close Velvet Basket



Suitable for storing squares, belts, etc. it is equipped with a push-pull jewelry box and a reasonable layout to maximize the use of the wardrobe's higher space to meet all jewelry storage needs.

The assembly of components is perfect and meticulous, the overall structure is stable, easy to install. Bottom covered in vandyck brown leather, paired with a highclass grey metal frame.



ITEM NO.	SPECIFICATION (WxDxH)	Applicative Inner Width
6053160S	564x480x200 mm	562 - 664 mm
6053170S	664x480x200 mm	662 - 764 mm
6053180S	764x480x200 mm	762 - 864 mm
6053190S	864x480x200 mm	862 - 964 mm

Soft-Close Trousers Rack



Suitable for storing clothes, trousers, towels, etc. With dampening guide rail, smooth, stable, quiet. The frame structure has a telescopic adjustment of 100mm.

Perfect and meticulous installation of components, stable overall structure, easy installation. Fluorocarbon gold coating, strong adaptability, fashion and elegant.

ITEM NO.	SPECIFICATION (WxDxH)	Applicative Inner Width
6050460S	564x480x72 mm	562 - 664 mm
6050470S	664x480x72 mm	662 - 764 mm
6050480S	764x480x72 mm	762 - 864 mm
6050490S	864x480x72 mm	862 - 964 mm

Soft-Close Accessory



Suitable for storing clothes, trousers, towels, etc. With dampening guide rail, which makes it smooth, stable and quiet. The frame structure has telescopic adjustment of 100mm.

Perfect and meticulous installation of components, stable overall structure, easy installation. Fluorocarbon gold coating, strong adaptability, fashion and elegant.

ITEM NO.	SPECIFICATION (WxDxH)	Applicative Inner Width
6050660S	564x480x72 mm	562 - 664 mm
6050670S	664x480x72 mm	662 - 764 mm
6050680S	764x480x72 mm	762 - 864 mm
6050690S	864x480x72 mm	862 - 964 mm

Top-Install Soft-close Wire Clothes Rack



Top mounted double guide rail structure, unique u-shaped design, equipped with steel ball separation. Perfect and meticulous installation of components, stable overall structure, easy installation. Fluorocarbon gold coating, strong adaptability.



ITEM NO.	SPECIFICATION (WxDxH)
6051300	120x468x135 mm
6051301	120x368x135 mm

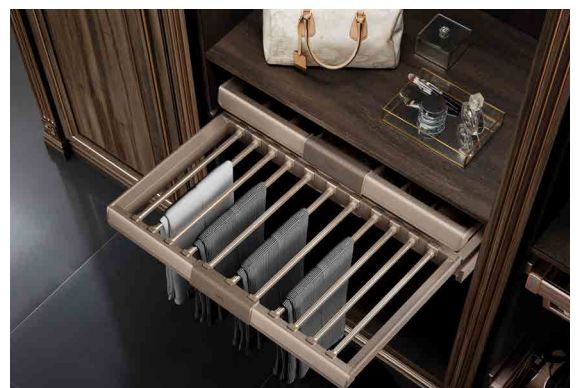
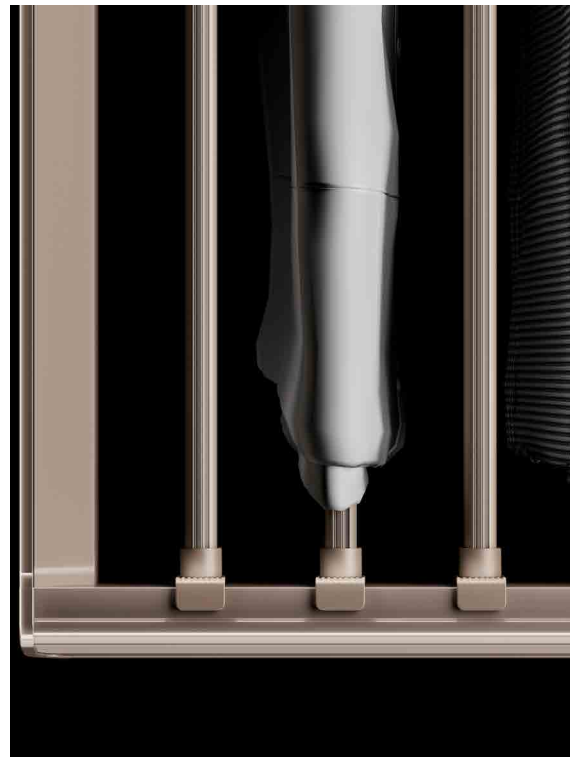
Top-Install S-Shaped Trousers Rack

Suitable for storing pants, large capacity. With dampening guide rail, smooth, stable, quiet.

Top mounted double guide rail structure, unique S shape design, perfect and meticulous components embedded, the overall structure is stable, easy to install. Fluorocarbon gold coating, strong adaptability.



ITEM NO.	SPECIFICATION (WxDxH)
6051200	335x468x135 mm



Soft-Close Liftable Hanger



Suitable for storing, coats, dresses, etc. The design makes full use of the wardrobe's higher space, making it easy to access items..

Meticulous installation of components, stable overall structure, easy installation. Fluorocarbon rose gold coating, strong adaptability, fashionable and elegant.

ITEM NO.	SPECIFICATION (WxDxH)	Applicative Inner Width
6051606S	(564-764)x148x860 mm	564 - 764 mm
6051607S	(764-1064)x148x860 mm	764 - 1064 mm

Rotating Mirror



Fluorocarbon gold coating, strong adaptability. fashion and elegant. Hidden in the inside of the cabinet, can be pulled out and shifted 90 degrees, save wardrobe space.

ITEM NO.	SPECIFICATION (WxDxH)
6052502S	46x350x1000

360 Revolving Multi-Layer Shoe Rack



Maximise your shoe storage space with this revolving shoe rack that allows for optimal visibility.

360° rotating design, convenient all-round access shoes;

Environmental protection spraying rose gold, strong adaptability, fashionable and elegant.



ITEM NO.	DESCRIPTION	SPECIFICATION (WxDxH)	Applicative Inner Width
6052303	8-Layers	700x360x(1350-1550) mm	764 mm
6052305	10-Layers	700x360x(1630-1830) mm	764 mm
6052304	12-Layers	700x360x(1910-2110) mm	764 mm

Electric Ascending/ Descending Cabinet



This innovative fully automated cabinet stays hidden until it descends by a touch or voice activated command.

Perfect for creating non-cluttered spaces.

ITEM NO.	SPECIFICATION (WxDxH)	Applicative Inner Width
S5011001	956x720x194 mm	≥964 mm

Clothing Rail



6052800S

Suitable for hanging clothes. Equipped with anti-skid rubber strip. Simple design, quick and convenient installation.

Fluorocarbon coating purple gold, strong adaptability, fashion and elegant.

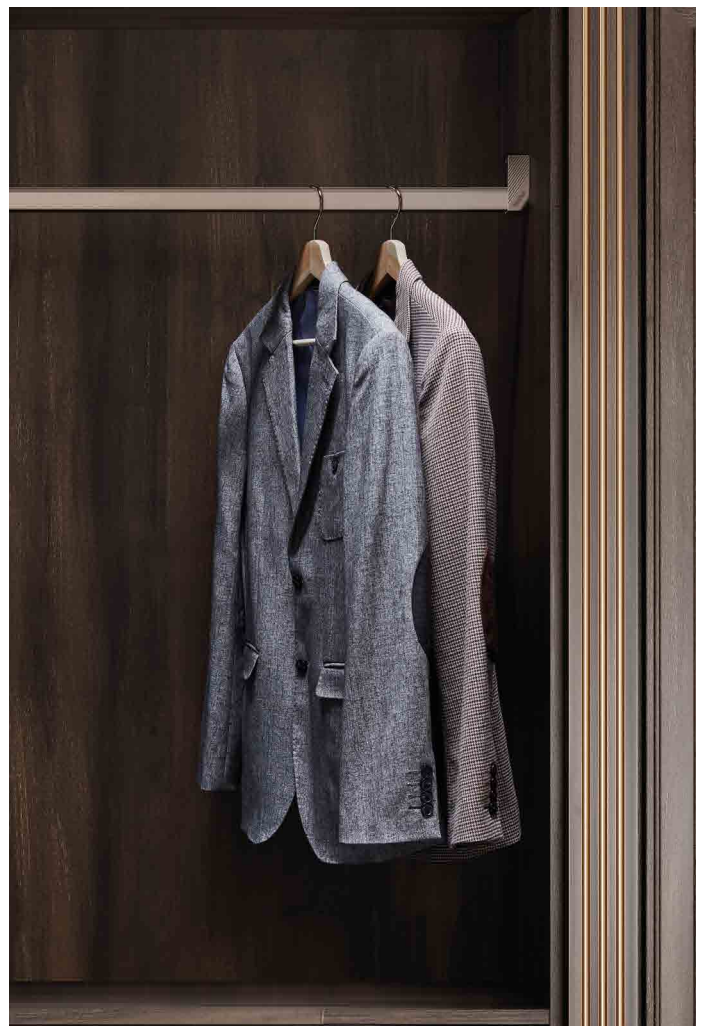
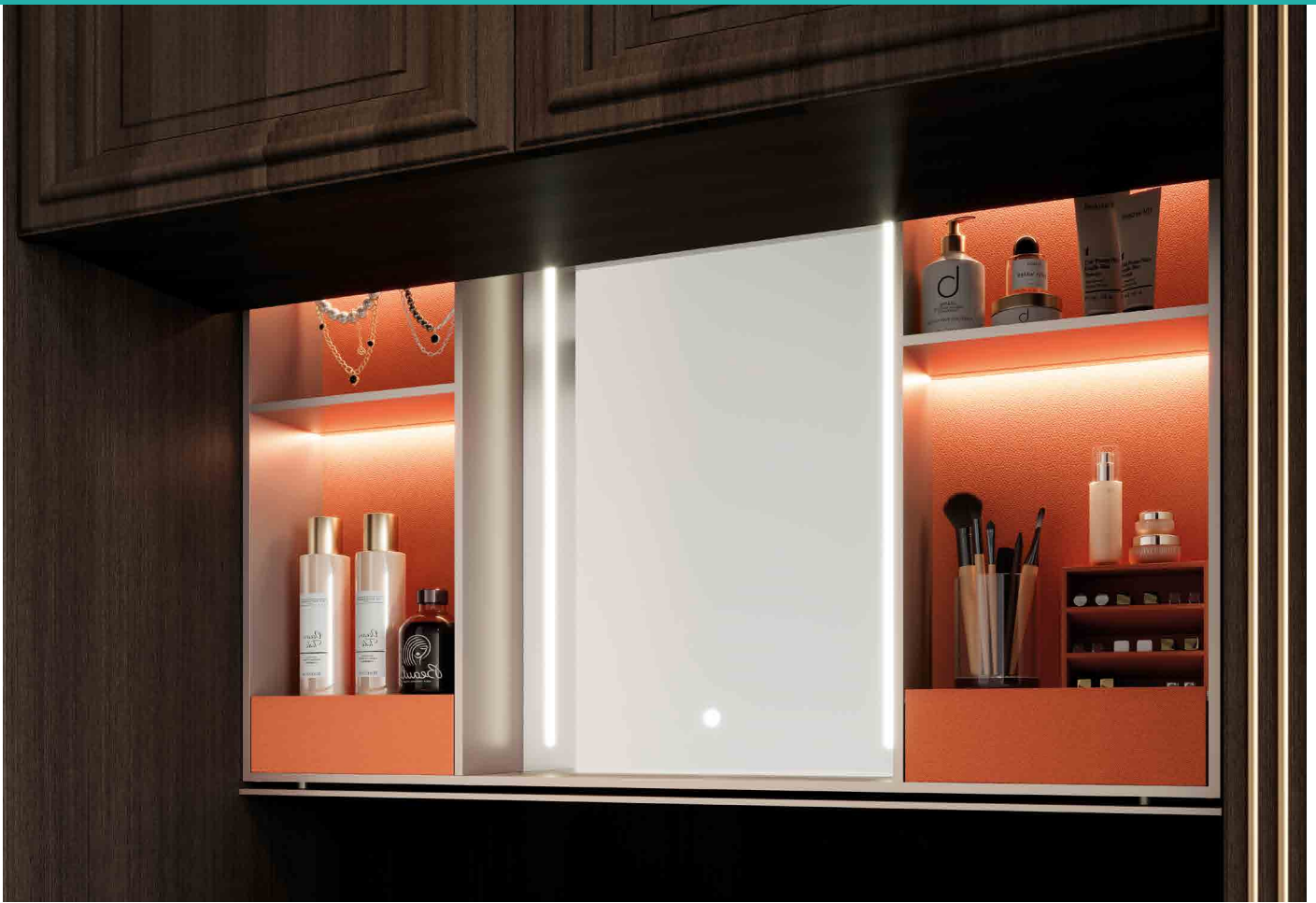


6052601

ITEM NO.	DESCRIPTION	SPECIFICATION (WxDxH)	Applicative Inner Width
6052800S	ALLUMINIUM ALLOY	3000 mm	3000 mm
6052801S	ALLUMINIUM ALLOY	-	-
6052601	ZINC ALLOY	-	-
6052600	ZINC ALLOY	-	-
6052602S	ZINC ALLOY	-	-



6052602S



RALPHIE SERIES

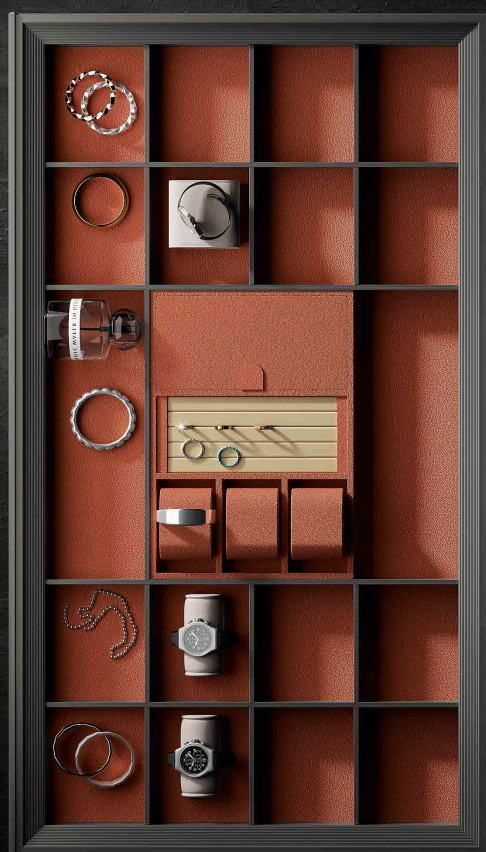
The practical design and elegance of this series is timeless and stunning.

REVOLUTIONARY
SURFACE
TREATMENT

INNOVATIVE
STRETCHABLE
FRAME DESIGN

MULTIPLE COLOR
OPTION

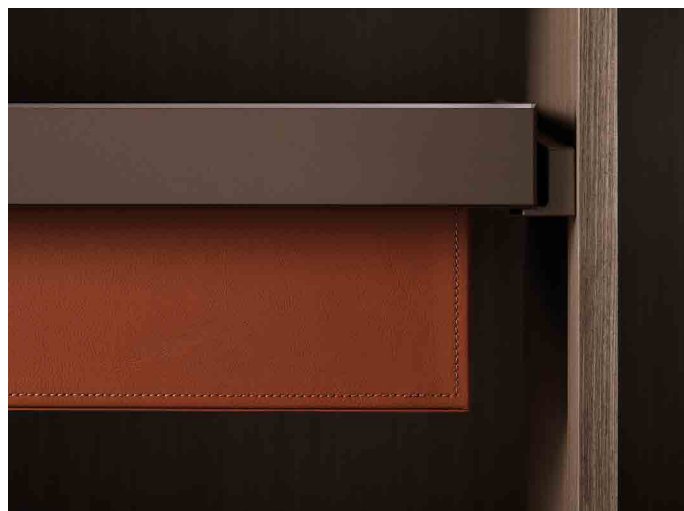
CONVENIENT
INSTALLATION AND
ASSEMBLY



Soft-Close Leather Basket

Suitable for storing clothes, trousers, towels, etc. With dampening guide rail, smooth and quiet; Different specification can be selected according to different cabinets.

The assembly of components is perfect and meticulous, the overall structure is stable, easy to install; Bordeaux red with agate red combination, interpretation of different fashion aesthetics.



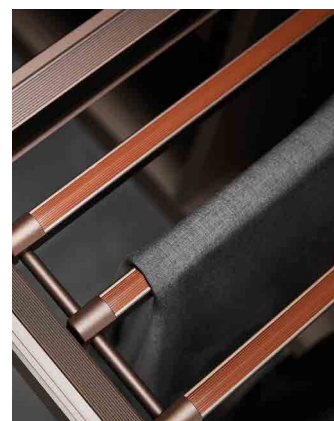
ITEM NO.				Cabinet outside width (3/4"board)		Cabinet outside width (5/8"board)		SPECIFICATION (WxDxH)
	Bordeaux Red ●	Champagne Gold ●	Highclass Grey ●	INCH	MM	INCH	MM	
6090260	6100260	6110260	23 5/8	600	23 7/16	596	564x466x169 mm	
6090270	6100270	6110270	27 9/16	700	27 3/8	696	664x466x169 mm	
6090280	6100280	6110280	31 1/2	800	31 5/16	796	764x466x169 mm	
6090290	6100290	6110290	35 7/16	900	35 1/4	896	864x466x169 mm	
6090210	6100210	6110210	39 3/8	1000	39 3/1	996	964x466x169 mm	

Soft-Close Trousers Rack



Suitable for storing clothes, trousers, towels, etc. With dampening guide rail, which makes it smooth and quiet; Different specification can be selected according to different cabinets.

The assembly of components is perfect and meticulous, the overall structure is stable, easy to install.



ITEM NO.			Cabinet outside width (3/4"board)		Cabinet outside width (5/8"board)		SPECIFICATION (WxDxH)
	Bordeaux Red ●	Champagne Gold ●	Highclass Grey ●	INCH	MM	INCH	
6090460	6100460	6110460	23 5/8	600	23 7/16	596	564x466x66 mm
6090470	6100470	6110470	27 9/16	700	27 3/8	696	664x466x66 mm
6090480	6100480	6110480	31 1/2	800	31 5/16	796	764x466x66 mm
6090490	6100490	6110490	35 7/16	900	35 1/4	896	864x466x66 mm
6090410	6100410	6110410	39 3/8	1000	39 3/1	996	964x466x66 mm

Soft-Close Top-Install Trousers Rack

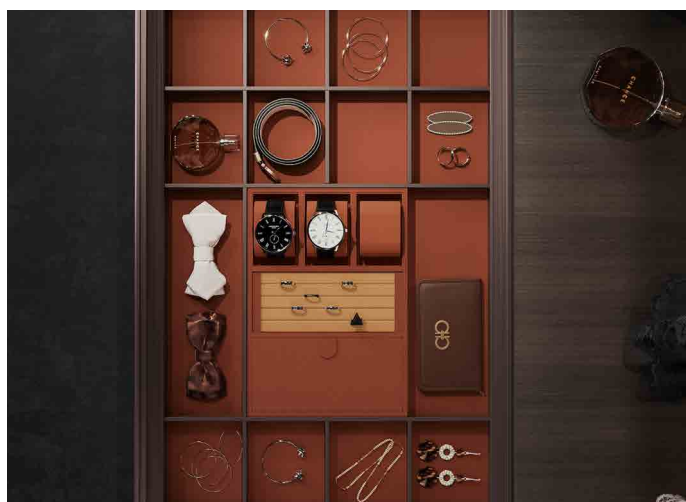


Top with S-shaped pants rack, suitable for storing pants or towels; With dampening guide, it has smooth and quiet operation.

Top mounted double guide structure, perfect and meticulous assembly of components, the overall structure is stable, easy to install.

ITEM NO.	DESCRIPTION	SPECIFICATION (WxDxH)
6111200	Highclass Grey ●	335x460x126 mm
6111201	Highclass Grey ●	335x468x136 mm

Soft-Close Jewerery Shelf



Suitable for storing squares, belts, etc. With dampening guide rail, which makes it smooth and quiet; Different specification can be selected according to different cabinets.

The assembly of components is perfect and meticulous, the overall structure is stable, easy to install.



ITEM NO.			Cabinet outside width (3/4"board)		Cabinet outside width (5/8"board)		SPECIFICATION (WxDxH)
	Bordeaux Red ●	Champagne Gold ●	INCH	MM	INCH	MM	
6094660 *	6104660 *	6114660	23 5/8	600	23 7/16	596	564x464x66 mm
6094670 *	6104670 *	6114670	27 9/16	700	27 3/8	696	664x464x66 mm
6094680	6104680	6114680	31 1/2	800	31 5/16	796	764x464x66 mm
6094690 *	6104690 *	6114690	35 7/16	900	35 1/4	896	864x464x66 mm
6094610 *	6104610 *	6114610	39 3/8	1000	39 3/16	996	964x464x66 mm

Items marked with * may be unavailable and subject to MOQ.

Soft-Close Liftable Hanger

Suitable for storing jackets, coats, evening dresses, etc. The function design of fluctuation. The functional design has ultimate flexibility that utilizes high spaces.

The assembly of components is perfect and meticulous, the overall structure is stable, easy to install.



ITEM NO.	DESCRIPTION	SPECIFICATION (WxDxH)
6101601	Champagne Gold ●	(564-764)x150x820 mm
6111602	Highclass Grey ●	(764-1064)x150x820 mm

Soft-Close Accessory Shelf



Suitable for storing squares, belts, etc. With dampening guide rail, which makes it smooth and quiet; Different specification can be selected according to different cabinets.

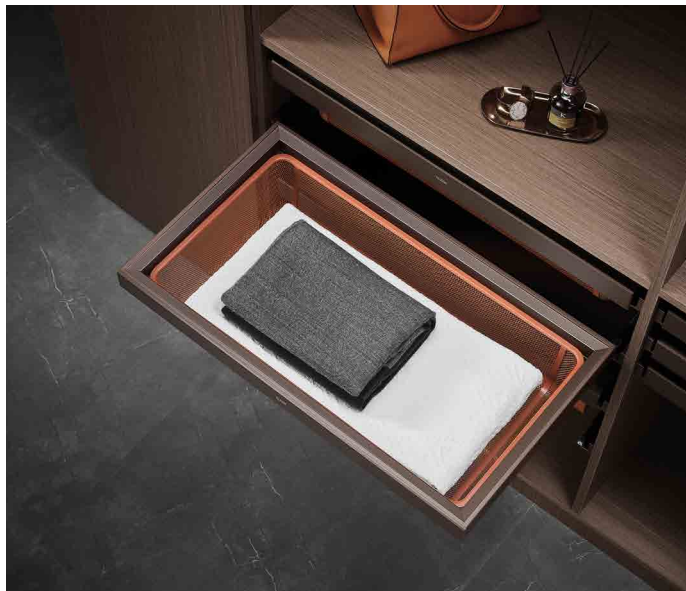
The assembly of components is perfect and meticulous, the overall structure is stable, easy to install; Bordeaux red with agate red leather.



ITEM NO.				Cabinet outside width (3/4"board)		Cabinet outside width (5/8"board)		SPECIFICATION (WxDxH)
	Bordeaux Red ●	Champagne Gold ●	Highclass Grey ●	INCH	MM	INCH	MM	
6090360 *	6100360 *	6110360	23 5/8	600	23 7/16	596	564x464x78 mm	
6090370 *	6100370 *	6110370 *	27 9/16	700	27 3/8	696	664x464x78 mm	
6090380	6100380	6110380 *	31 1/2	800	31 5/16	796	764x464x78 mm	
6090390 *	6100390 *	6110390	35 7/16	900	35 1/4	896	864x464x78 mm	
6090310 *	6100310 *	6110310	39 3/8	1000	39 3/16	996	964x464x78 mm	

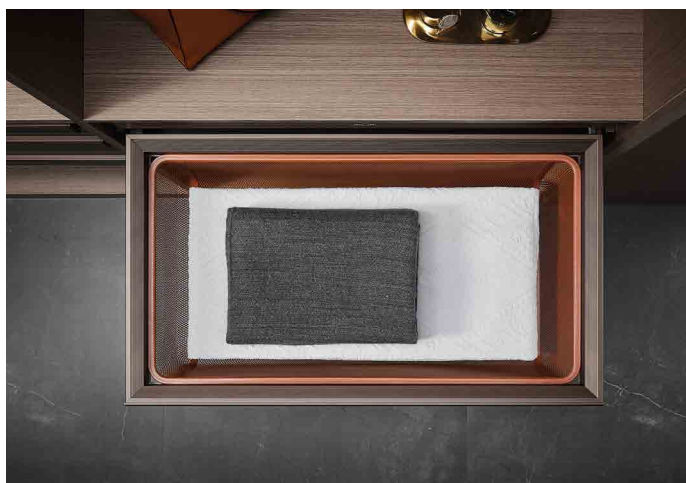
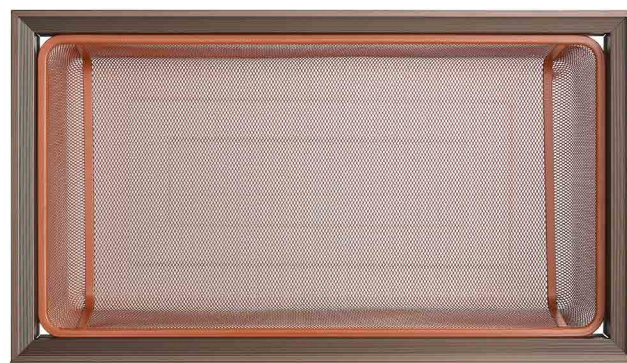
Items marked with * may be unavailable and subject to MOQ.

Soft-Close Grid Basket



Suitable for storing clothes, trousers, towels, etc. With dampening guide rail, smooth and quiet; Different specifications can be selected according to different cabinets.

The assembly of components is perfect and meticulous, the overall structure is stable, and easy to install; Bordeaux red with agate red mesh basket.



ITEM NO.				Cabinet outside width (3/4"board)		Cabinet outside width (5/8"board)		SPECIFICATION (WxDxH)
	Bordeaux Red ●	Champagne Gold ●	Highclass Grey ●	INCH	MM	INCH	MM	
6090160 *	6100160 *	6110160	23 5/8	600	23 7/16	596	564x466x184 mm	
6090170 *	6100170 *	6110170	27 9/16	700	27 3/8	696	664x466x184 mm	
6090180	6100180	6110180 *	31 1/2	800	31 5/16	796	764x466x184 mm	
6090190 *	6100190 *	6110190	35 7/16	900	35 1/4	896	864x466x184 mm	
6090110 *	6100110 *	6110110	39 3/8	1000	39 3/16	996	964x466x184 mm	

Items marked with * may be unavailable and subject to MOQ.



NUOMI

CONTACT US

DYK HARDWARE LTD

2631 Viking Way Unit 138, Richmond, BC, V6V 3B5 Canada

mike@dykhardware.com

778-223-6810

info@dykhardware.com

778-883-5557

www.nuomicanada.com

N51 LIVING LTD

4535 104 Ave SE, Calgary, AB, T2C 5C6 Canada

sales@n51living.com

403-768-2370

