



HIGH-END WARDROBE SOLUTIONS

NUOMI

Minimalist Luxury Design Solution

- Premium Quality
- Functional Design
- User Friendly
- Minimalist
- Easy Installation



ABOUT US

Nuomi Intelligent Production Base Phase I



Nuomi Intelligent Production Base Phase II



NUOMI, founded in 2003 and is a high-tech enterprise that integrates research and development, design, production, and sales.

As one of China's leading high-end home hardware brands, NUOMI pioneered and practices the concept of "whole-house hardware ecological chain." It uses the "four-same" concept of the same style, same color, same quality, and same brand to achieve design upgrades in hardware aesthetics and has fully laid out seven major product systems, including "kitchen storage solutions, wardrobe storage solutions, kitchen sink, furniture motion solutions, smart lighting system, high-end custom aluminum application system and high-end door lock solution."

Over the years, NUOMI has gathered global research and development intelligence and launched many innovative technologies and hardware solutions. It currently holds more than 250 innovative design invention patents and has obtained international authoritative quality certification such as the UK Crown ISO9001, Swiss SGS, and German TOV for its products. With the transformation of Industry 4.0 intelligent manufacturing, NUOMI took the lead in building on 80,000 square meter (Phase I) and 63,000 square meter (Phase II) intelligent production base in the industry, equipped with intelligent robots, automation equipment, and unmanned storage systems. It uses technology to empower the flexible and precise production of hardware, comprehensively improving delivery capabilities and winning many honors such as "National High-tech Enterprise," "National Invisible Champion of Manufacturing Industry," and "Benchmark Brand of Home Furnishing Intelligent Manufacturing."

Through comprehensive capacity building, NUOMI has become one of the few high-end whole-house hardware service providers in the industry that can provide one-stop, integrated matching solutions. As of now, NUOMI, which is facing the global market, has become a major supplier to many cabinet and wardrobe brands and home furnishing brands worldwide, with business covering more than 70 countries and regions around the world. In the Chinese market, NUOMI has established strategic cooperation with top-listed home furnishing brands, and its sales network has more than 200 dealers and agents, making it one of the leading brands in the industry.

NUOMI INNOVATION

O1 INTRODUCTION

HIGH-END CUSTOM HARDWARE REDEFINING HOME LIVING

NUOMI MISSION:
Make your home life more tasteful

NUOMI VISION:
Become a world-class brand in home hardware

70+
Best-selling countries and regions

200+
Sales service outlets

380
Domestic and foreign home brand partners

O2 INNOVATIVE & INTELLIGENT

7 MAJOR CATEGORIES
Integrated hardware solutions for whole house

250 ITEMS
Innovative design patents

4.0 DIGITAL INTELLIGENCE
International industry 4.0 digital intelligence production base

**COMMITTED TO QUALITY
FOCUSED ON EVERY DETAIL**

0.01
Precision control within 0.01cm

3
ISO, SGS, TUV certified

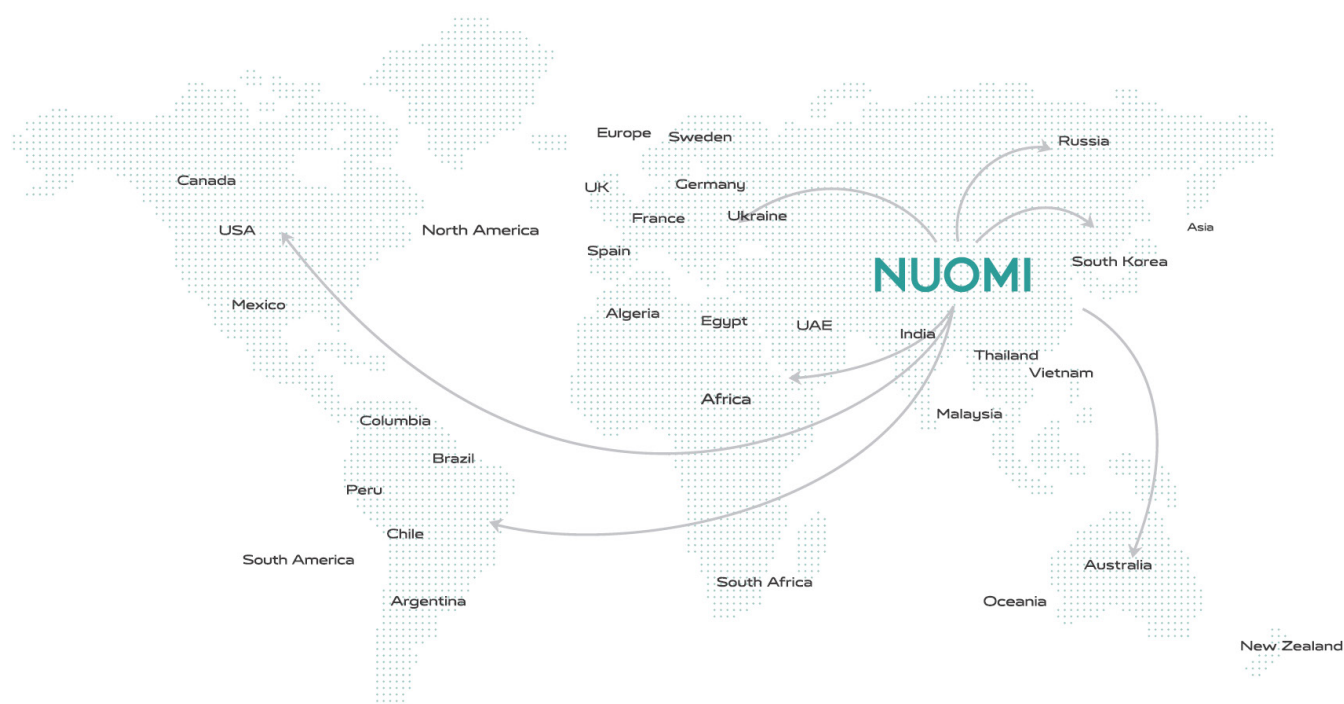
168
Nano dry plating technology with
168-hour salt spray test

80000
Slides pass SGS 80000 cycle tests



SALES NETWORK

NUOMI is a global brand. With a globalized service system, NUOMI has long provided hardware solutions for hundreds of international kitchen cabinet and home furnishing brands. Its products are sold in more than 70 countries and regions around the world, including Asia, Europe, and North America, and have a leading position in the international high-end market.



CERTIFICATES and AWARDS

Was rated as "Top Ten Brands in the Hardware Industry" for three consecutive years from 2014 to 2016

Won the national "high-tech enterprise certificate" in 2019

Was rated as "Top 100 Chinese Home Furnishing Supply Chain Companies" by the China Furniture & Decoration Chamber of Commerce in 2021

Was rated as "Strategic Partner" by China Furniture & Decoration Chamber of Commerce in 2021

Named the National Invisible Champion of Nanhai Manufacturing Industry in 2022

Won the "Benchmark Brand of Smart Home Manufacturing", "Design Innovation Award", and "Technology Leadership Award" in 2022

Selected as a Specialized and Innovative New Enterprise in Foshan in 2022

Identified as Foshan High-end Customization of Whole House Hardware (Nuomi Home) Engineering Research Center in 2022

BULLET wingless hinge series wins 2023 FDA Gold Award in Home Hardware - The Sole Recipient in [Their Field](#)

ENCANTO Series Pull-Out Basket receives 2023 FDA French Design Award

Best Integrated Component Award for Door-Wall-Cabinet Industry in 2023

EFFIE series wardrobe storage hardware won the 2024 CD Awards Extreme Award

ZEUS cob series smart lighting won the 2024 CD Awards Finalist Award



ENCANTO series
2023 French Design Award



BULLET wingless hinge series
2023 FDA Gold Award



BULLET wingless hinge series
2023 MUSE Design Awards Gold Winner



EFFIE series CD Awards
2024 Extreme Award



ZEUS cob series
2024 CD Awards, Finalist Award



2022 Home Smart Manufacturing Leader
Technical Pioneer, Design Innovator



H-tech Corporate Certificate



ISO9001 Quality Management
System Certification



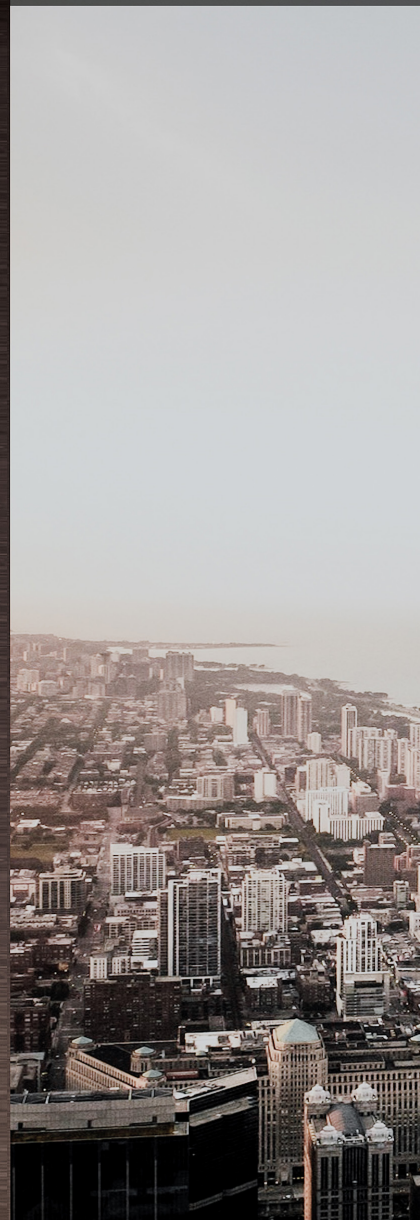
TÜV Quality Testing Certification



SGS Quality Testing Certification



WARDROBE STORAGE SOLUTIONS





HERA

Art of Contemporary Living

VIOLET

Discover Ultra-luxurious Design

RALPHIE

Practical and Tasteful Beauty

HERA SERIES

Rich textured materials in a sleek style, together with built-in ambient lighting, brings a sense of modern elegance and luxury.

MINIMALIST EDGES
AND CORNERS

DIFFERENT MATERIAL
PRESENTS UNIQUE
AESTHETIC



HURMAR CONCEALED
SLIDE SEAMLESS
DESIGN

CONVENIENT
ASSEMBLY AND
INSTALLATION

REVOLUTIONARY
SURFACE
TREATMENT



Soft-Close Leather Basket

Suitable for storing clothes, trousers, towels, etc. Large opening visual design, load capacity up to 25kg, meeting the storage needs of heavy clothes.

The assembly of components is perfect and meticulous, The basket body is made of high-grade waterproof leather, resistant to moisture and corrosion, and has no risk of deformation.



ITEM NO.	Cabinet outside width (3/4"board)		Cabinet outside width (5/8"board)		SPECIFICATION	APPLICABLE WIDTH
	INCH	MM	INCH	MM		
6180280	31 1/2	800	31 5/16	796	764x 470x207 mm	800 mm
6180290	35 7/16	900	35 1/4	896	864x470x207 mm	900 mm

Soft-Close Trousers Rack

Suitable for storing trousers. Trouser hangers prevent wrinkles. Snap-on terminal are easy to remove and replace.

The assembly of components is perfect and meticulous, The aluminum alloy pant hangers are fully covered with leather, providing ultimate care for delicate trousers.

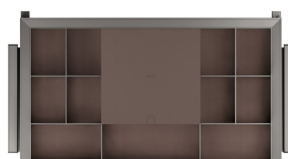
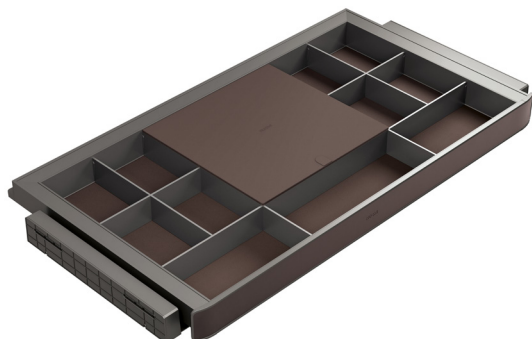


ITEM NO.	Cabinet outside width (3/4"board)		Cabinet outside width (5/8"board)		SPECIFICATION	APPLICABLE WIDTH
	INCH	MM	INCH	MM		
6180480	31 1/2	800	31 5/16	796	764x470x62 mm	800 mm
6180490	35 7/16	900	35 1/4	896	86x470x62 mm	900 mm

Soft-Close Accessory Shelf

Suitable for storing glasses, belts, etc. Maximize the use of space to meet all jewelry storage needs.

The assembly of components is perfect and meticulous. The overall structure is stable, and easy to install; Bottom covered vandyck brown leather, is paired with a highclass grey metal frame.



ITEM NO.	Cabinet outside width (3/4"board)		Cabinet outside width (5/8"board)		SPECIFICATION	APPLICABLE WIDTH
	INCH	MM	INCH	MM		
6180380	31 1/2	800	31 5/16	796	764x470x207 mm	800 mm
6180390	35 7/16	900	35 1/4	896	864x470x207 mm	900 mm

Electric Control Liftable Hanger

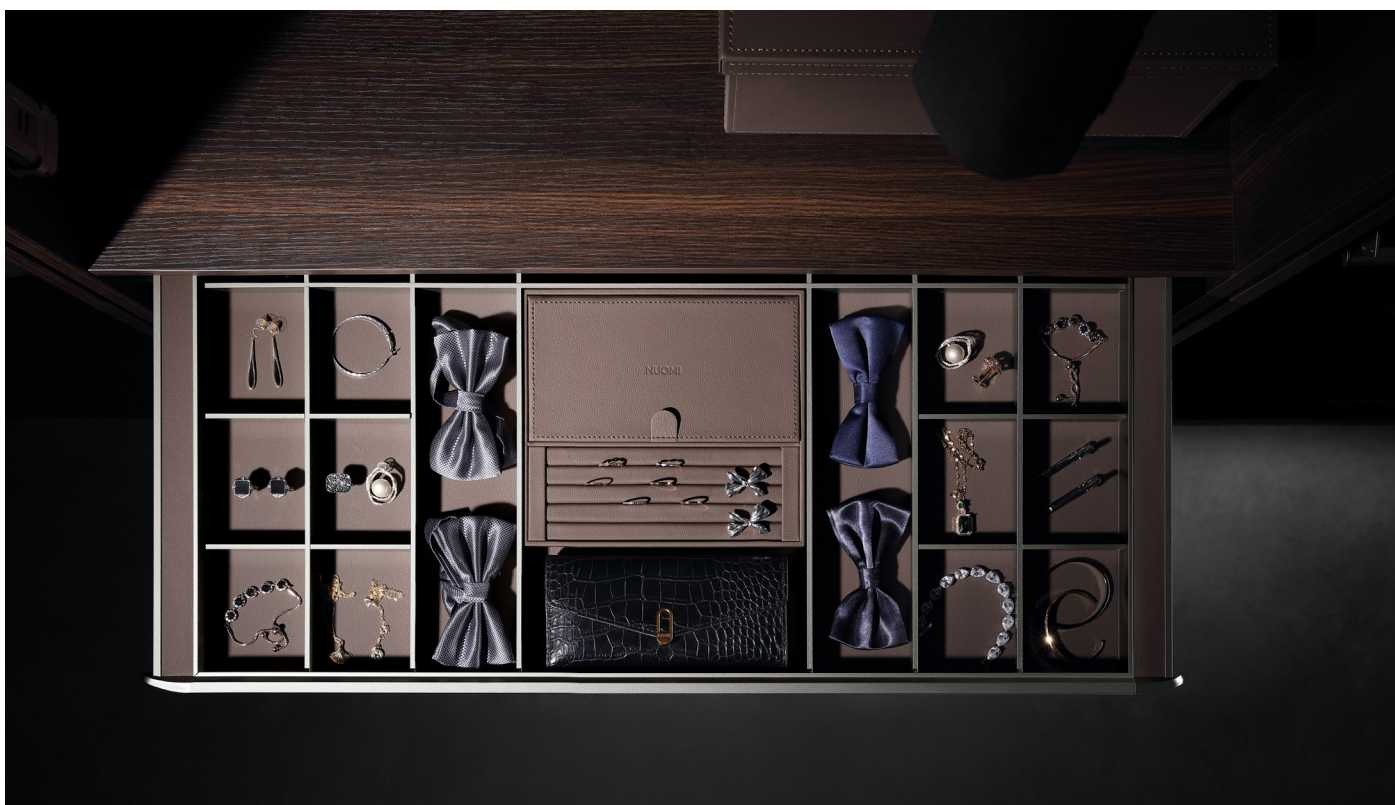


Suitable for storing jackets, coats, dresses, etc. Hover in any direction from 0-88°, convenient and easy to pick up items. The width is adjustable, suitable for 800-1200mm cabinets, and the maximum load-bearing capacity is 15kg.

Electric lifting design makes full use of the higher space of the wardrobe. The horizontal bar is fully wrapped in leather. The assembly of components is perfect and meticulous. The overall structure is stable, and easy to install.



ITEM NO.	Cabinet outside width (3/4"board)		Cabinet outside width (5/8"board)		SPECIFICATION	APPLICABLE WIDTH
	INCH	MM	INCH	MM		
6181601	31 1/2	800	31 5/16	796	(764-1164)x140x881 mm	800 mm



Soft-Close Lifiable Hanger



Suitable for storing jackets, coats, dresses, etc. The design makes full use of the wardrobe's higher space, easy access to items. The horizontal bar is fully wrapped in leather. The assembly of components is perfect and meticulous. The overall structure is stable, easy to install.



ITEM NO.	Cabinet outside width (3/4"board)		Cabinet outside width (5/8"board)		SPECIFICATION	APPLICABLE WIDTH
	INCH	MM	INCH	MM		
6181607	31 1/2	800	31 5/16	796	(764-1064)x148x860 mm	800 mm

Safe Storage



A state-of-the-art secure storage solution engineered to protect your most valuable assets. Equipped with advanced biometric authentication and real-time monitoring features.

It provides unmatched security and peace of mind.



ITEM NO.	Cabinet outside width (3/4"board)		Cabinet outside width (5/8"board)		SPECIFICATION	APPLICABLE WIDTH
	INCH	MM	INCH	MM		
6185390	35 7/16	900	35 1/4	896	860x180x450 mm	900 mm

Hanging Rod



6183100

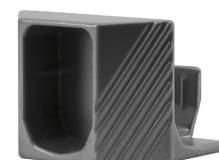
ITEM NO.	DESCRIPTION	SPECIFICATION
6183100	Highclass Grey Aluminium	2000 mm
6183101	Highclass Grey Zinc	-
6183102	Highclass Grey Zinc	-

Covered with anti-slip strips. Side installation + top installation + 90° corner, 3 application methods with diverse functions.

The metal frame is covered in vandyck brown leather.



6183101



6183102

Soft-Close Accessory Shelf



Suitable for storing squares, belts, etc. it is equipped with a push-pull jewelry box and a reasonable layout to maximize the use of the wardrobe's higher space to meet all jewelry storage needs.

The assembly of components is perfect and meticulous, the overall structure is stable, easy to install; Bottom covered vandyck brown leather, paired with highclass grey metal frame.



ITEM NO.	SPECIFICATION	APPLICABLE WIDTH
6180680	764 x 470 x 62 mm	763-769 mm
6180690	864 x 470 x 62 mm	863-869 mm

VIOLET SERIES

Ultra-luxury with unmatched design standards creates an unparalleled wardrobe aesthetic.

EXTRAORDINARY
ELEGANCE

SOFT TOUCH
VELVET

HURMAR CON-
CEALED DAMPING
SLIDE

INNOVATIVE
STRETCHABLE
FRAME DESIGN

REVOLUTIONARY
SURFACE
TREATMENT

INNOVATIVE
INTEGRATED
FRAME DESIGN

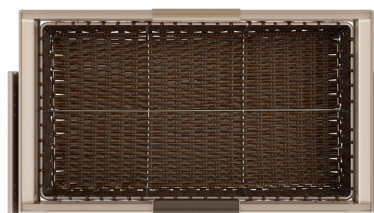


Soft-Close Rattan Basket



Suitable for storing clothes, trousers, towels, etc. With dampening guide rail, which makes it smooth, stable and quiet. The frame structure has a telescopic adjustment of 100mm.

Perfect and meticulous installation of components, stable overall structure, easy installation. Fluorocarbon gold coating, strong adaptability, fashion and elegant.



ITEM NO.	Cabinet outside width (3/4"board)		Cabinet outside width (5/8"board)		SPECIFICATION	APPLICABLE WIDTH
	INCH	MM	INCH	MM		
6050270S	27 9/16	700	27 6/16	696	664x480x200 mm	700 mm
6050280S	31 1/2	800	31 5/16	796	764x480x200 mm	800 mm
6050290S	35 7/16	900	35 1/4	896	864x480x200 mm	900 mm

Soft-Close Velvet Basket



Suitable for storing squares, belts, etc. it is equipped with a push-pull jewelry box and a reasonable layout to maximize the use of the wardrobe's higher space to meet all jewelry storage needs.

The assembly of components is perfect and meticulous, the overall structure is stable, easy to install. Bottom covered in vandyck brown leather, paired with a highclass grey metal frame.



ITEM NO.	Cabinet outside width (3/4"board)		Cabinet outside width (5/8"board)		SPECIFICATION	APPLICABLE WIDTH
	INCH	MM	INCH	MM		
6053170S	27 9/16	700	27 6/16	696	664x480x200 mm	700 mm
6053180S	31 1/2	800	31 5/16	796	764x480x200 mm	800 mm

Soft-Close Trousers Rack

Suitable for storing clothes, trousers, towels, etc. With dampening guide rail, smooth, stable, quiet. The frame structure has a telescopic adjustment of 100mm.

Perfect and meticulous installation of components, stable overall structure, easy installation. Fluorocarbon gold coating, strong adaptability, fashion and elegant.



ITEM NO.	Cabinet outside width (3/4"board)		Cabinet outside width (5/8"board)		SPECIFICATION	APPLICABLE WIDTH
	INCH	MM	INCH	MM		
6050470S	27 9/16	700	27 6/16	696	664x480x72 mm	700 mm
6050480S	31 1/2	800	31 5/16	796	764x480x72 mm	800 mm
6050490S	35 7/16	900	35 1/4	896	864x480x72 mm	900 mm

Soft-Close Accessory



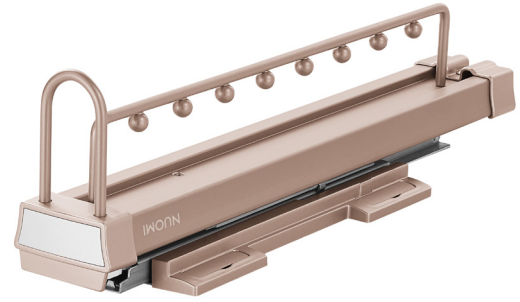
Suitable for storing clothes, trousers, towels, etc. With dampening guide rail, which makes it smooth, stable and quiet. The frame structure has telescopic adjustment of 100mm.

Perfect and meticulous installation of components, stable overall structure, easy installation. Fluorocarbon gold coating, strong adaptability, fashion and elegant.



ITEM NO.	Cabinet outside width (3/4"board)		Cabinet outside width (5/8"board)		SPECIFICATION	APPLICABLE WIDTH
	INCH	MM	INCH	MM		
6050670S	27 9/16	700	27 6/16	696	664x480x72 mm	700 mm
6050680S	31 1/2	800	31 5/16	796	764x480x72 mm	800 mm
6050690S	35 7/16	900	35 1/4	896	864x480x72 mm	900 mm

Top-Install Soft-close Wire Clothes Rack



Top mounted double guide rail structure, unique u-shaped design, equipped with steel ball separation. Perfect and meticulous installation of components, stable overall structure, easy installation. Fluorocarbon gold coating, strong adaptability.

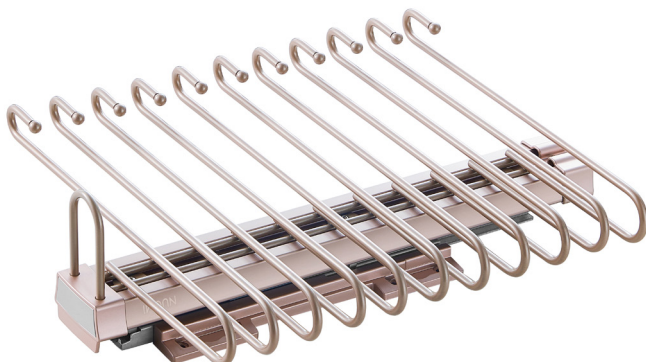
ITEM NO.	SPECIFICATION
6051300	120x468x135 mm
6051301	120x368x135 mm



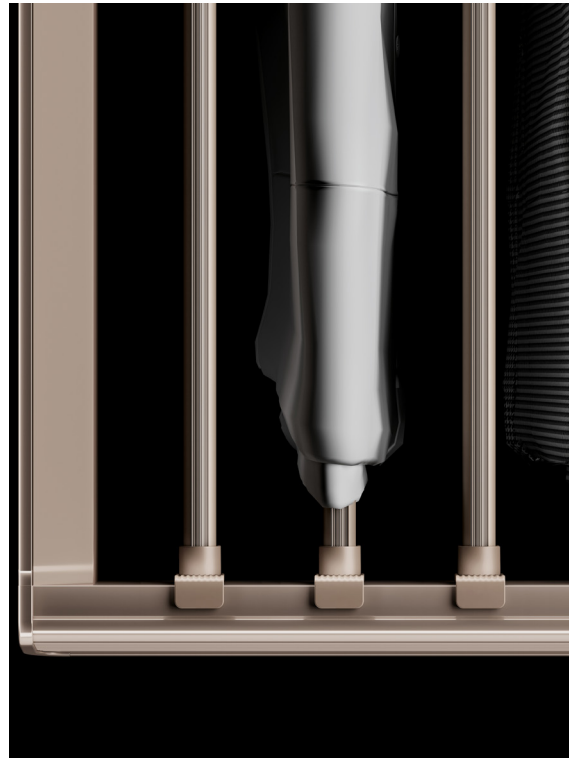
Top-Install S-Shaped Trousers Rack

Suitable for storing pants, large capacity. With dampening guide rail, smooth, stable, quiet.

Top mounted double guide rail structure, unique S shape design, perfect and meticulous components embedded, the overall structure is stable, easy to install. Fluorocarbon gold coating, strong adaptability.



ITEM NO.	SPECIFICATION
6051200	335x468x135 mm



Soft-Close Liftable Hanger



Suitable for storing, coats, dresses, etc. The design makes full use of the wardrobe's higher space, making it easy to access items..

Meticulous installation of components, stable overall structure, easy installation. Fluorocarbon rose gold coating, strong adaptability, fashionable and elegant.

ITEM NO.	Cabinet outside width (3/4"board)		Cabinet outside width (5/8"board)		SPECIFICATION	APPLICABLE WIDTH
	INCH	MM	INCH	MM		
6051607S	31 1/2	800	31 5/16	796	(764-1064)x148x860 mm	800 mm

Rotating Mirror



Fluorocarbon gold coating, strong adaptability. fashion and elegant. Hidden in the inside of the cabinet, can be pulled out and shifted 90 degrees, save wardrobe space.

ITEM NO.	SPECIFICATION
6052502S	46x350x1000

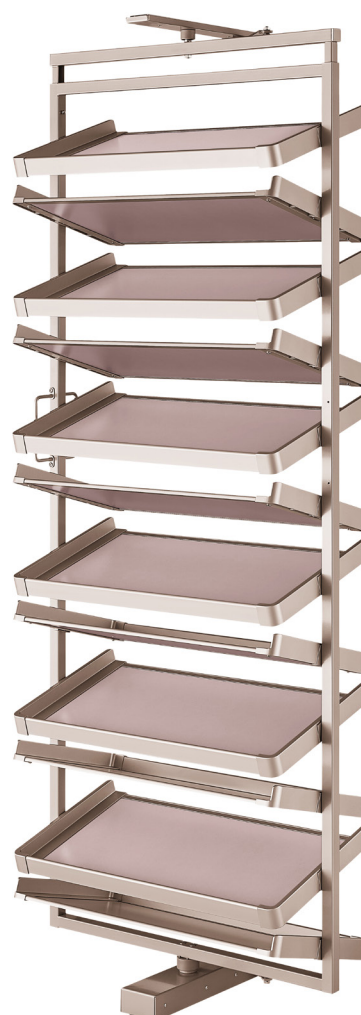
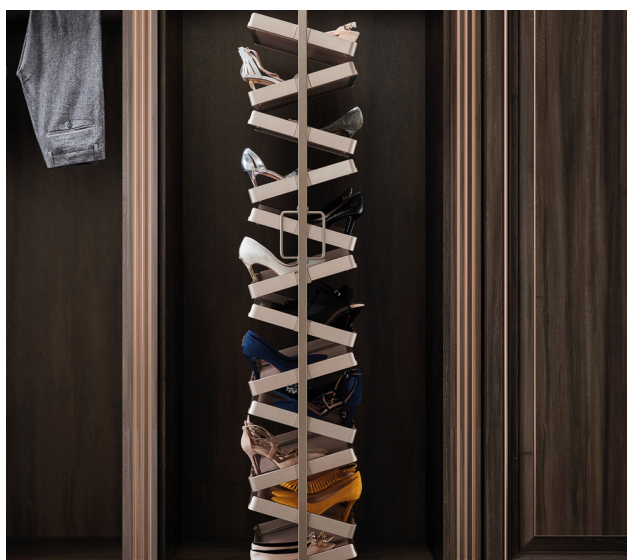
360 Revolving Multi-Layer Shoe Rack



Maximise your shoe storage space with this revolving shoe rack that allows for optimal visibility.

360° rotating design, convenient all-round access shoes;

Environmental protection spraying rose gold, strong adaptability, fashionable and elegant.



ITEM NO.	DESCRIPTION	Cabinet outside width (3/4"board)		Cabinet outside width (5/8"board)		SPECIFICATION	APPLICABLE WIDTH
		INCH	MM	INCH	MM		
6052303	8-Layers	31 1/2	800	31 5/16	796	700x360x(1350-1550) mm	800 mm

Electric Ascending/ Descending Cabinet



This innovative fully automated cabinet stays hidden until it descends by a touch or voice activated command.

Perfect for creating non-cluttered spaces.

ITEM NO.	Cabinet outside width (3/4"board)		Cabinet outside width (5/8"board)		SPECIFICATION	APPLICABLE WIDTH
	INCH	MM	INCH	MM		
S5011001	39 3/8	1000	39 3/16	996	956x720x194 mm	1000 mm

Clothing Rail



6052800S

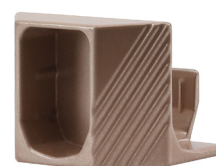
Suitable for hanging clothes. Equipped with anti-skid rubber strip. Simple design, quick and convenient installation.

Fluorocarbon coating purple gold, strong adaptability, fashion and elegant.



6052601

ITEM NO.	DESCRIPTION	SPECIFICATION	APPLICABLE WIDTH
6052800S	ALLUMINIUM ALLOY	3000 mm	3000 mm
6052801S	ALLUMINIUM ALLOY	-	-
6052601	ZINC ALLOY	-	-
6052600	ZINC ALLOY	-	-
6052602S	ZINC ALLOY	-	-



6052602S



RALPHIE SERIES

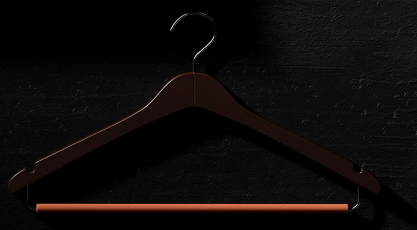
The practical design and elegance of this series
is timeless and stunning.

REVOLUTIONARY
SURFACE
TREATMENT

INNOVATIVE
STRETCHABLE
FRAME DESIGN

MULTIPLE COLOR
OPTION

CONVENIENT
INSTALLATION AND
ASSEMBLY



Soft-Close Leather Basket

Suitable for storing clothes, trousers, towels, etc. With dampening guide rail, smooth and quiet; Different specification can be selected according to different cabinets.

The assembly of components is perfect and meticulous, the overall structure is stable, easy to install; Bordeaux red with agate red combination, interpretation of different fashion aesthetics.



ITEM NO.	DESCRIPTION		SPECIFICATION	APPLICABLE WIDTH
6110260	Highclass Grey	●	564x466x169 mm	560 - 568 mm
6110270	Highclass Grey	●	664x466x169 mm	660 - 668 mm
6090280	Bordeaux Red	●	764x466x169 mm	760 - 768 mm
6110280	Highclass Grey	●	764x466x169 mm	760 - 768 mm
6100280	Champagne Gold	●	764x466x169 mm	760 - 768 mm
6110290	Highclass Grey	●	864x466x169 mm	860 - 868 mm
6100290	Champagne Gold	●	864x466x169 mm	860 - 868 mm

Soft-Close Trousers Rack



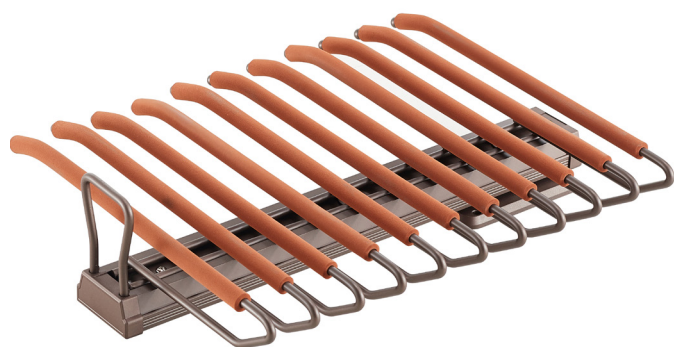
Suitable for storing clothes, trousers, towels, etc. With dampening guide rail, which makes it smooth and quiet; Different specification can be selected according to different cabinets.

The assembly of components is perfect and meticulous, the overall structure is stable, easy to install.



ITEM NO.	DESCRIPTION		SPECIFICATION	APPLICABLE WIDTH
6110460	Highclass Grey	●	564x466x66 mm	560 - 768 mm
6110470	Highclass Grey	●	664x466x66 mm	660 - 768 mm
6090480	Bordeux Red	●	764x466x66 mm	760 - 768 mm
6110480	Highclass Grey	●	764x466x66 mm	760 - 768 mm
6100480	Champagne Gold	●	764x466x66 mm	760 - 768 mm
6110490	Highclass Grey	●	864x466x66 mm	860 - 868 mm
6100490	Champagne Gold	●	864x466x66 mm	860 - 868 mm

Soft-Close Top-Install Trousers Rack

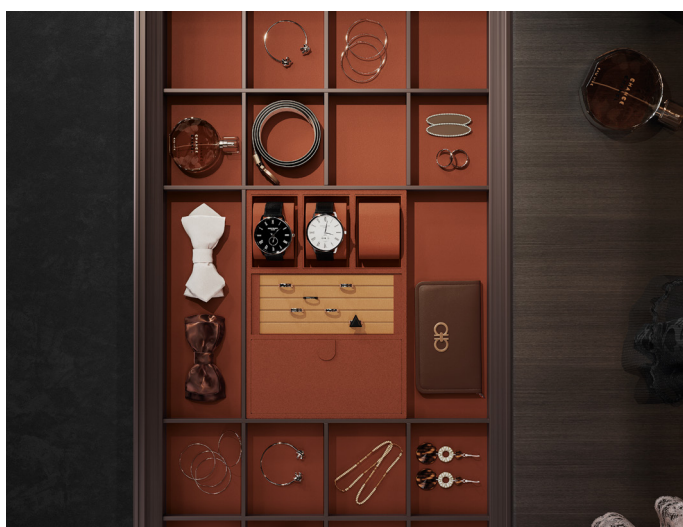


Top with S-shaped pants rack, suitable for storing pants or towels; With dampening guide, it has smooth and quiet operation.

Top mounted double guide structure, perfect and meticulous assembly of components, the overall structure is stable, easy to install.

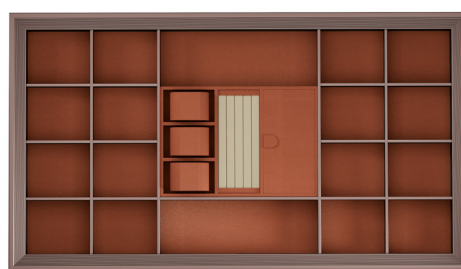
ITEM NO.	DESCRIPTION	SPECIFICATION
6111200	Highclass Grey ●	335x460x126 mm
6111201	Highclass Grey ●	335x468x136 mm

Soft-Close Jewerery Shelf



Suitable for storing squares, belts, etc. With dampening guide rail, which makes it smooth and quiet; Different specification can be selected according to different cabinets.

The assembly of components is perfect and meticulous, the overall structure is stable, easy to install.

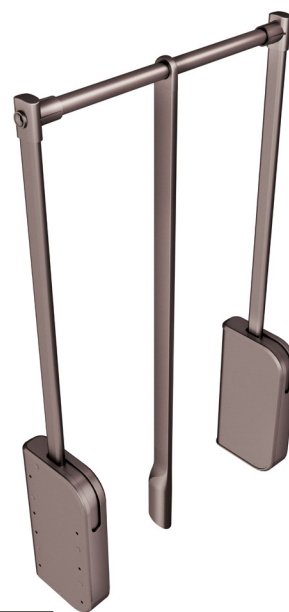




ITEM NO.	DESCRIPTION	SPECIFICATION	APPLICABLE WIDTH
6114660	Highclass Grey ●	564x464x66 mm	560 - 568 mm
6114670	Highclass Grey ●	664x464x66 mm	660 - 668 mm
6094680	Bordeux Red ●	764x464x66 mm	760 - 768 mm
6104680	Champagne Gold ●	764x464x66 mm	760 - 768 mm
6114680	Highclass Grey ●	764x464x66 mm	760 - 768 mm
6114690	Highclass Grey ●	864x464x66 mm	860 - 868 mm

Soft-Close Liftable Hanger

Suitable for storing jackets, coats, evening dresses, etc. The function design of fluctuation. The functional design has ultimate flexibility that utilizes high spaces.

The assembly of components is perfect and meticulous, the overall structure is stable, easy to install.



ITEM NO.	DESCRIPTION	SPECIFICATION	APPLICABLE WIDTH
6101601	Champagne Gold 	(563-764)x150x820 mm	564-764 mm
6111602	Highclass Grey 	(764-1064)x150x860 mm	764-1068 mm





Soft-Close Accessory Shelf



Suitable for storing squares, belts, etc. With dampening guide rail, which makes it smooth and quiet; Different specification can be selected according to different cabinets.

The assembly of components is perfect and meticulous, the overall structure is stable, easy to install; Bordeaux red with agate red leather.



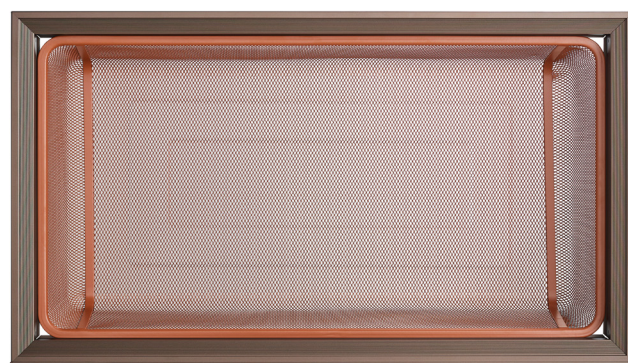
ITEM NO.	DESCRIPTION	SPECIFICATION	APPLICABLE WIDTH
6090380	Bordeaux Red 	764x464x78 mm	760 - 768 mm
6100380	Champagne Gold 	764x464x78 mm	760 - 768 mm
6100390	Champagne Gold 	864x466x78 mm	860 - 868 mm
6110390	Highclass Grey 	864x466x78 mm	860 - 868 mm




Soft-Close Grid Basket



Suitable for storing clothes, trousers, towels, etc. With dampening guide rail, smooth and quiet; Different specifications can be selected according to different cabinets.

The assembly of components is perfect and meticulous, the overall structure is stable, and easy to install; Bordeaux red with agate red mesh basket.



ITEM NO.	DESCRIPTION	SPECIFICATION	APPLICABLE WIDTH
6090180	Bordeaux Red 	764x464x184 mm	760 - 768 mm
6100180	Champagne Gold 	764x464x184 mm	760 - 768 mm
6110180	Highclass Grey 	765x464x184 mm	761 - 768 mm



NUOMI

CONTACT US

DYK HARDWARE LTD

2631 Viking Way Unit 138, Richmond, BC, V6V 3B5 Canada

mike@dykhardware.com

778-223-6810

www.nuomicanada.com

N51 LIVING LTD

4535 104 Ave SE, Calgary, AB, T2C 5C6 Canada

sales@n51living.com

403-768-2370

