



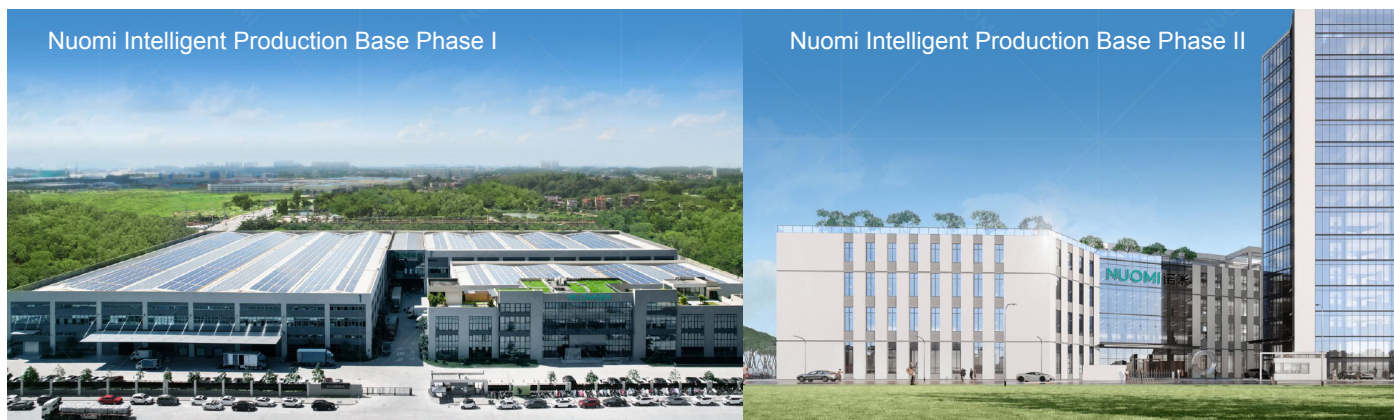
HIGH-END KITCHEN HARDWARE

NUOMI

Minimalist Luxury Design Solution

- Premium Quality
- Functional Design
- User Friendly
- Minimalist
- Easy Installation

ABOUT US



NUOMI, founded in 2003 and is a high-tech enterprise that integrates research and development, design, production, and sales.

As one of China's leading high-end home hardware brands, NUOMI pioneered and practices the concept of "whole-house hardware ecological chain." It uses the "four-same" concept of the same style, same color, same quality, and same brand to achieve design upgrades in hardware aesthetics and has fully laid out seven major product systems, including "kitchen storage solutions, wardrobe storage solutions, kitchen sink, furniture motion solutions, smart lighting system, high-end custom aluminum application system and high-end door lock solution."

Over the years, NUOMI has gathered global research and development intelligence and launched many innovative technologies and hardware solutions. It currently holds more than 250 innovative design invention patents and has obtained international authoritative quality certification such as the UK Crown ISO9001, Swiss SGS, and German TOV for its products. With the transformation of Industry 4.0 intelligent manufacturing, NUOMI took the lead in building on 80,000 square meter (Phase I) and 63,000 square meter (Phase II) intelligent production base in the industry, equipped with intelligent robots, automation equipment, and unmanned storage systems. It uses technology to empower the flexible and precise production of hardware, comprehensively improving delivery capabilities and winning many honors such as "National High-tech Enterprise," "National Invisible Champion of Manufacturing Industry," and "Benchmark Brand of Home Furnishing Intelligent Manufacturing."

Through comprehensive capacity building, NUOMI has become one of the few high-end whole-house hardware service providers in the industry that can provide one-stop, integrated matching solutions. As of now, NUOMI, which is facing the global market, has become a major supplier to many cabinet and wardrobe brands and home furnishing brands worldwide, with business covering more than 70 countries and regions around the world. In the Chinese market, NUOMI has established strategic cooperation with top-listed home furnishing brands, and its sales network has more than 200 dealers and agents, making it one of the leading brands in the industry.

NUOMI INNOVATION

O1 INTRODUCTION

HIGH-END CUSTOM HARDWARE REDEFINING HOME LIVING

NUOMI MISSION:

Make your home life more tasteful

NUOMI VISION:

Become a world-class brand in home hardware

70+

Best-selling countries and regions

200+

Sales service outlets

380

Domestic and foreign home brand partners

O2 INNOVATIVE & INTELLIGENT

7 MAJOR CATEGORIES

Integrated hardware solutions for whole house

250 ITEMS

Innovative design patents

4.0 DIGITAL INTELLIGENCE

International industry 4.0 digital intelligence production base

COMMITTED TO QUALITY

FOCUSED ON EVERY DETAIL

0.01

Precision control within 0.01cm

3

ISO, SGS, TUV certified

168

Nano dry plating technology with 168-hour salt spray test

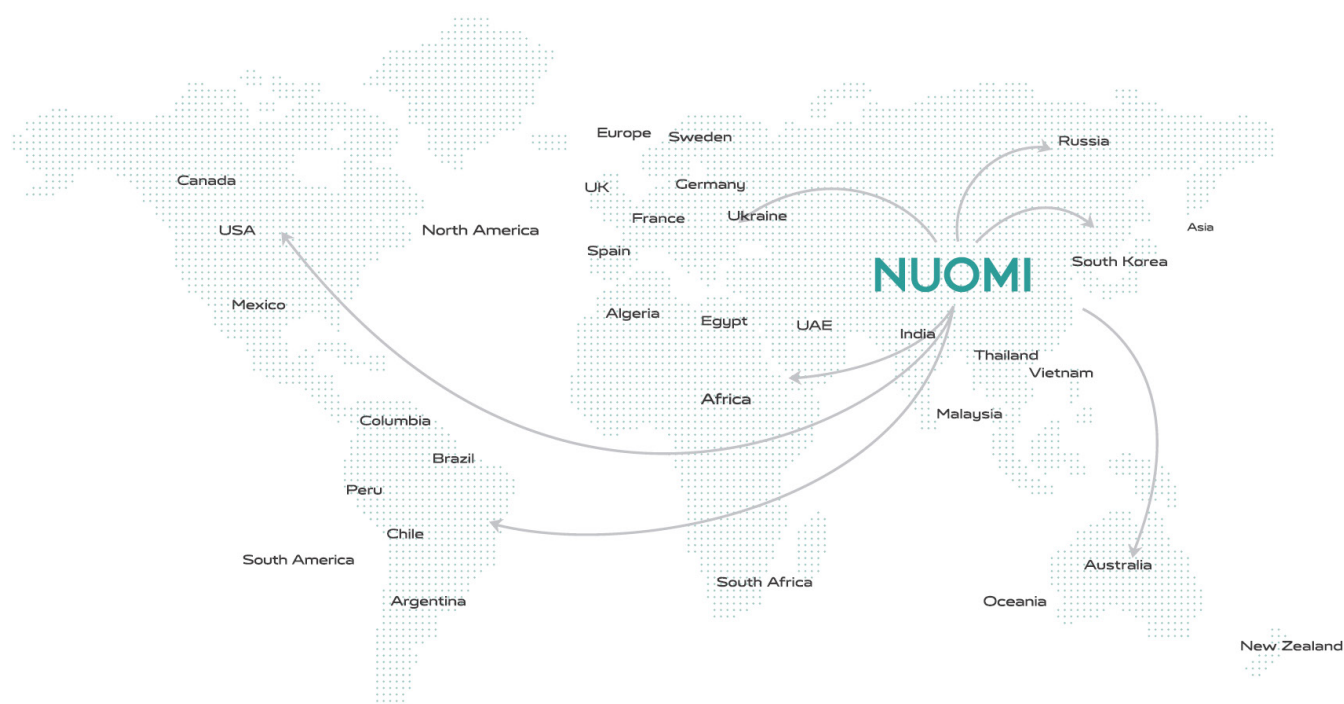
80000

Slides pass SGS 80000 cycle tests



SALES NETWORK

NUOMI is a global brand. With a globalized service system, NUOMI has long provided hardware solutions for hundreds of international kitchen cabinet and home furnishing brands. Its products are sold in more than 70 countries and regions around the world, including Asia, Europe, and North America, and have a leading position in the international high-end market.



70⁺
Best-selling
countries and
regions

200⁺
Sales service
outlets

380⁺
Domestic and foreign
home brand partners

CERTIFICATES and AWARDS

Was rated as "Top Ten Brands in the Hardware Industry" for three consecutive years from 2014 to 2016

Won the national "high-tech enterprise certificate" in 2019

Was rated as "Top 100 Chinese Home Furnishing Supply Chain Companies" by the China Furniture & Decoration Chamber of Commerce in 2021

Was rated as "Strategic Partner" by China Furniture & Decoration Chamber of Commerce in 2021

Named the National Invisible Champion of Nanhai Manufacturing Industry in 2022

Won the "Benchmark Brand of Smart Home Manufacturing", "Design Innovation Award", and "Technology Leadership Award" in 2022

Selected as a Specialized and Innovative New Enterprise in Foshan in 2022

Identified as Foshan High-end Customization of Whole House Hardware (Nuomi Home) Engineering Research Center in 2022

BULLET wingless hinge series wins 2023 FDA Gold Award in Home Hardware - The Sole Recipient in [Their Field](#)

ENCANTO Series Pull-Out Basket receives 2023 FDA French Design Award

Best Integrated Component Award for Door-Wall-Cabinet Industry in 2023

EFFIE series wardrobe storage hardware won the 2024 CD Awards Extreme Award

ZEUS cob series smart lighting won the 2024 CD Awards Finalist Award



ENCANTO series
2023 French Design Award



BULLET wingless hinge series
2023 FDA Gold Award



BULLET wingless hinge series
2023 MUSE Design Awards Gold Winner



EFFIE series CD Awards
2024 Extreme Award



ZEUS cob series
2024 CD Awards, Finalist Award



2022 Home Smart Manufacturing Leader
Technical Pioneer, Design Innovator



H-tech Corporate Certificate



ISO9001 Quality Management
System Certification



TÜV Quality Testing Certification



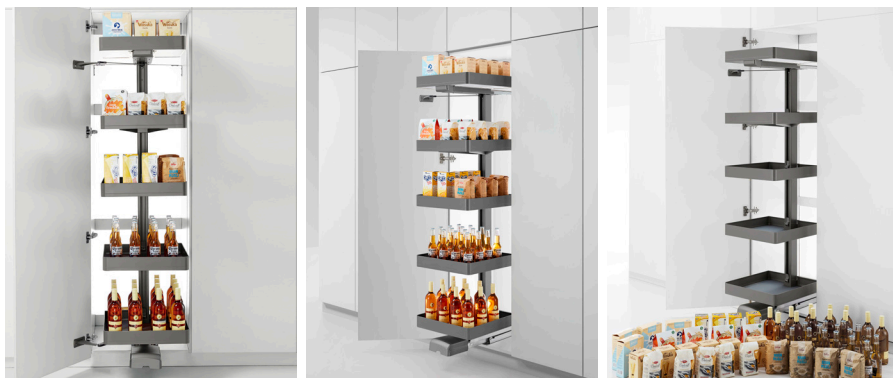
SGS Quality Testing Certification



KITCHEN STORAGE SOLUTIONS



FUNCTION AND TECHNOLOGY



STORAGE CAPACITY

The functionality and practicality perfectly combine to create a high-performance functional hardware product suitable for storing various items in the kitchen.



AVIATION ALUMINIUM ALLOY

Aviation grade aluminum alloy frame, 10mm ultra-narrow frame design, light and durable, rust resistant, effectively improve space utilization.



FLUOROCARBON COATING SURFACE TREATMENT

Environmental health and comfort, anti-corrosion and rust-resistance, wear-resistance and scratch-resistance, while also enhancing the weather resistance of aluminum materials to prevent staining and fading.



GERMAN HURMAR SOFT-CLOSE SYNCHRONOUS GUIDE RAIL

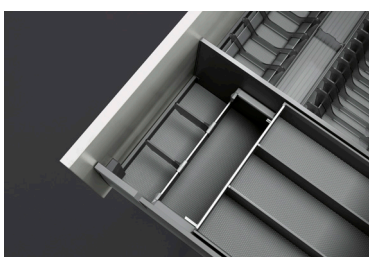
Three-section rail design, fully-locking structure, two-way buffering; Fully-covered protective structure prevents dust and sawdust; dampening system, soft and silent operation; The thickness of the guide rail plate is 10mm, with galvanized steel plate ensuring strength.

Dynamic load is 30kg and operating smoothly under the extreme load; Pass SGS 80000 cycle movement test.



BOTTOM WITH ANTI-SLIP MAT

Prevents collision and noise of objects during movement, and facilitates cleaning.



INNER DRAWER DESIGN

Featuring a nested design with an additional storage box; Nested design with clear classification and three-dimensional storage, improving storage efficiency by 20%.



CHAMPAGNE GOLD AND HIGHCLASS GREY, MINIMALIST AND LIGHT LUXURY

To meet your individual needs, Champagne gold, Highclass grey is always the most popular color, amazing appearance, following the current fashion trend.

Rotatable Multi-functional Pantry



Combining advanced engineering and premium materials, this hardware solution seamlessly merges functionality with practicality. Its slim-sided construction and non-slip base create a high-performance system for storing various kitchen items while maintaining a sleek, modern aesthetic.

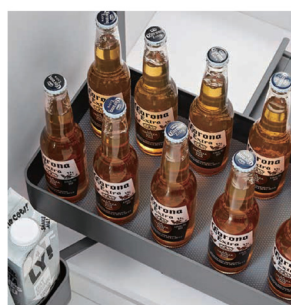


ITEM	ITEM NO.	DESCRIPTION	Cabinet outside width (3/4"board)		Cabinet outside width (5/8"board)		SPECIFICATION	APPLICABLE WIDTH
			INCH	MM	INCH	MM		
FRAME	2020006D	Highclass Grey	23 5/8	600	23 7/16	596	555x500x(1780 above) mm	600 mm
BASKET	2020219	Highclass Grey	23 5/8	600	23 7/16	596	555x500x(1780 above) mm	600 mm

Roll-out Pantry



Incorporating German-engineered, super load-bearing roller rails and a novel linkage mechanism, this advanced system smoothly extends inner gaskets while protecting cabinet doors. Aviation-grade aluminum and steel components ensure rust-resistant durability, offered in Champagne Gold or High-class Grey with a non-slip mat.



ITEM	ITEM NO.	DESCRIPTION	Cabinet outside width (3/4"board)		Cabinet outside width (5/8"board)		SPECIFICATION	APPLICABLE WIDTH
			INCH	MM	INCH	MM		
FRAME	2020003B	Highclass Grey	17 11/16	450	17 9/16	446	405x500x(1780 above) mm	450 mm
BASKET	2020183	Highclass Grey	17 11/16	450	17 9/16	446	405x500x(1780 above) mm	450 mm
FRAME	20200068	Highclass Grey	23 5/8	600	23 7/16	596	555x500x(1780 above) mm	600 mm
BASKET	2020186	Highclass Grey	23 5/8	600	23 7/16	596	555x500x(1780 above) mm	600 mm

Electric Lifting Unit

AVIATION-GRADE ALUMINUM ALLOY

Aviation-grade aluminum alloy material, ultra-narrow frame, lightweight, durable, and resistant to rust, maximized space utilization.

FLUOROCARBON COATING

Environmental protection, health and comfort, while increasing the corrosion resistance, frost resistance and fade resistance of aluminum.

HIDDEN SLIDING STRUCTURE

Smooth and silent operation. Pass SGS 20000 cycle movement test.

INNOVATIVE DC MAGNETIC MOTOR

DC magnetic motor, low noise operation, stable lifting, power saving, energy saving, stable operation, long life, low noise; Power short circuit overload protection.

SMART START WITH BUTTON E

Smart button E allows for easy operation of the up/ down/pause functions during the cooking process, making full use of kitchen space. The height adjustment is controlled at will, with automatic stopping upon encountering obstacles. No need to climb to reach items, making it easy for both the elderly and children to use.

ANTI-PINCH DEVICE

During operation, it automatically reverses when encountering an obstruction to prevent pinching, ensuring safe use for family members.

CUSTOMIZED STORAGE

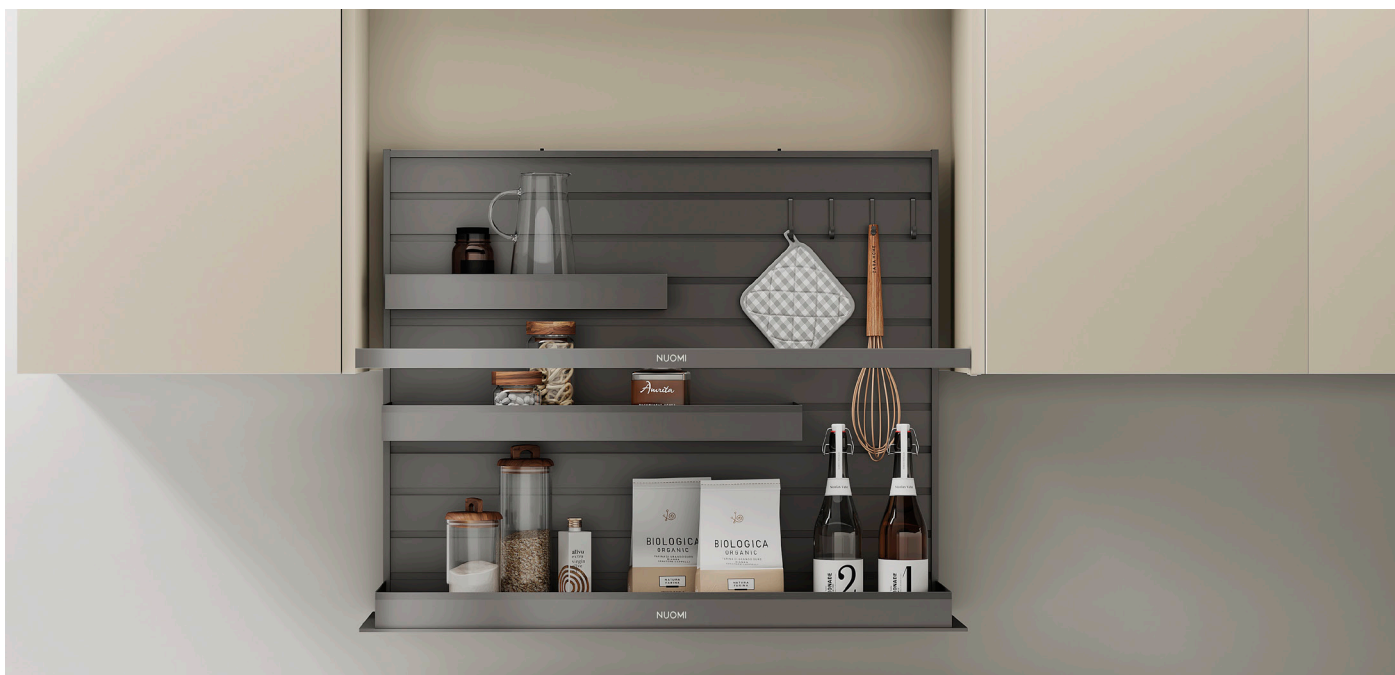
Self-defined partition scientific storage, and randomly place storage tanks, cans, condiments, knives and chopsticks, and kitchen utensils according to personal habits;

Removable storage module makes cleaning and taking more convenient.

LOAD CAPACITY

Max loading :21KG





ITEM NO.	DESCRIPTION	Cabinet outside width (3/4"board)		Cabinet outside width (5/8"board)		SPECIFICATION	APPLICABLE WIDTH
		INCH	MM	INCH	MM		
S2018001	Highclass Grey	31 1/2	800	31 5/16	796	754x308x688mm	800 mm



ITEM NO.	DESCRIPTION	Cabinet outside width (3/4"board)		Cabinet outside width (5/8"board)		SPECIFICATION	APPLICABLE WIDTH
		INCH	MM	INCH	MM		
S2018002	Highclass Grey	31 1/2	800	31 5/16	796	764x287x702mm	800 mm

Soft-Close Tall Unit



Engineered with German technology, this high-capacity kitchen system features super load-bearing damping rails with synchronized upper and lower guide rails for smooth, stable operation. Its 180° rotatable basket height is easily adjustable, while premium aluminum alloy and steel construction ensure rust and abrasion resistance.



ITEM	ITEM NO.	DESCRIPTION	Cabinet outside width (3/4"board)		Cabinet outside width (5/8"board)		SPECIFICATION	APPLICABLE WIDTH
			INCH	MM	INCH	MM		
FRAME	2010003B	Highclass Grey	11 13/16	300	11 5/8	296	250x460x(1780-2080) mm	300 mm
BASKET	2020183	Highclass Grey	11 13/16	300	11 5/8	296	250x460x(1780-2080) mm	300 mm
SLIDE	2010007B	Highclass Grey	11 13/16	300	11 5/8	296	250x460x(1780-2080) mm	300 mm

Encanto Magic Corner



Make full use of the corner space, separated linkage structure and full pull-out design, greatly facilitating storage. It can be installed in both left and right corner openings.



ITEM	ITEM NO.	DESCRIPTION		SPECIFICATION	APPLICABLE WIDTH
FRAME (Left)	1010001B	Highclass Grey	●	(860-960)x530x520mm	900-1000 mm
FRAME (Right)	1010002B	Highclass Grey	●	(860-960)x530x520mm	900-1000 mm
BASKET (Left)	1010180	Highclass Grey	●	(860-960)x530x520mm	900-1000 mm
BASKET (Right)	1010180	Highclass Grey	●	(860-960)x530x520mm	900-1000 mm

Encanto Universal Magic Corner



Make full use of the corner space, separated linkage structure and full pull-out design, greatly facilitating storage. It can be installed in both left and right corner openings.

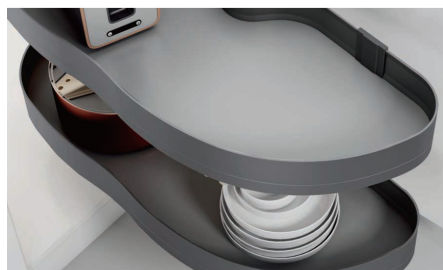
ITEM	ITEM NO.	DESCRIPTION	Cabinet outside width (3/4"board)		Cabinet outside width (5/8"board)		SPECIFICATION	APPLICABLE WIDTH
			INCH	MM	INCH	MM		
FRAME	318BC0001	Highclass Grey	23 5/8	600	23 7/16	596	620x477x560mm	600 mm
BASKET	318BC1807	Highclass Grey	23 5/8	600	23 7/16	596	620x477x560mm	600 mm

Encanto Revolving Saucer



Fashionable artistic design, constantly evolving production techniques, and hidden practical function.

Make full use of the corner space, separated linkage structure and full pull-out design, greatly facilitating storage. It can be installed in both left and right corner openings.



ITEM	ITEM NO.	DESCRIPTION		SPECIFICATION	APPLICABLE WIDTH
FRAME (Left)	1020071	Highclass Grey	●	828 x 500 x (620-720) mm	900-1000 mm
FRAME (Right)	1020072	Highclass Grey	●	828 x 500 x (620-720) mm	900-1000 mm

Multifunctional Basket with Slidable Cutlery Tray




Basket for base cabinet, proper space partition design, satisfy the needs of storing different sizes of utensils, making the kitchen storage neat and orderly.

The whole basket is made of superior aviation aluminium alloy, advanced fluorocarbon surface treatment technology, strong corrosion resistance, rust-resistance, abrasive-resistance. The guide rail passed the European standard SGS 80000 cycle movement test.

The bottom is covered by non-slip mat, which prevents the items from collision, and convenient to clean at the same time.



ITEM NO.	DESCRIPTION	Cabinet outside width (3/4"board)		Cabinet outside width (5/8"board)		SPECIFICATION	APPLICABLE WIDTH
		INCH	MM	INCH	MM		
3189007	Highclass Grey 	35 7/16	900	35 1/4	896	(864-868)x471x226 mm	900 mm

Pull-out Basket with Slidable Cutlery Tray




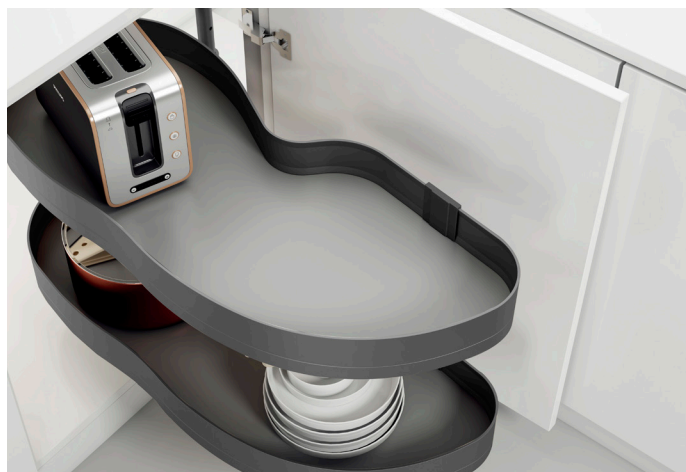
Basket for base cabinet, proper space partition design, satisfy the needs of storing different sizes of utensils, making the kitchen storage neat and orderly.

The whole basket is made of superior aviation aluminium alloy, advanced fluorocarbon surface treatment technology, strong corrosion resistance, rust-resistance, abrasive-resistance. The guide rail passed the European standard SGS 80000 cycle movement test.

The bottom is covered by non-slip mat, which prevents the items from collision, and convenient to clean at the same time.



ITEM NO.	DESCRIPTION	Cabinet outside width (3/4"board)		Cabinet outside width (5/8"board)		SPECIFICATION	APPLICABLE WIDTH
		INCH	MM	INCH	MM		
3189008	Highclass Grey 	35 7/16	900	35 1/4	896	(864-868)x471x226 mm	900 mm



Push-Open High Pull-out Basket For Cookware



ITEM NO.	DESCRIPTION	Cabinet outside width (3/4"board)		Cabinet outside width (5/8"board)		SPECIFICATION	APPLICABLE WIDTH
		INCH	MM	INCH	MM		
3186028	Highclass Grey ●	23 5/8	600	23 7/16	596	564*471*226mm	600 mm

Ultra Slim Drawer Box



ITEM NO.	DESCRIPTION	Cabinet outside width (3/4"board)		Cabinet outside width (5/8"board)		SPECIFICATION	APPLICABLE WIDTH
		INCH	MM	INCH	MM		
3186017	Highclass Grey ●	23 5/8	600	23 7/16	596	564+457*103mm	600 mm
3186018	Highclass Grey ●	23 5/8	600	23 7/16	596	564+457*151mm	600 mm

Miele



Inner Pull-out Basket for Cutlery Tray



Basket for base cabinet, proper space partition design, satisfy the needs of storing different sizes of utensils, making the kitchen storage neat and orderly.

The whole basket is made of superior aviation aluminium alloy, advanced fluorocarbon surface treatment technology, strong corrosion resistance, rust resistance, abrasive resistance. The guide rail passed the European standard SGS 80000 cycle movement test.

The bottom is covered by non-slip mat, preventing the items from colliding, and is convenient to clean at the same time.



ITEM NO.	DESCRIPTION	Cabinet outside width (3/4"board)		Cabinet outside width (5/8"board)		SPECIFICATION	APPLICABLE WIDTH
		INCH	MM	INCH	MM		
3186016	Highclass Grey ●	23 5/8	600	23 7/16	596	(564-568)x423x85 mm	600 mm
3189016	Highclass Grey ●	35 7/16	900	35 1/4	896	(864-868)x471x216 mm	900 mm

U-shaped Basket Under Sink



Basket for base cabinet, proper space partition design, satisfy the needs of storing different sizes of utensils, making the kitchen storage neat and orderly.

The whole basket is made of superior aviation aluminium alloy, advanced fluorocarbon surface treatment technology, strong corrosion resistance, rust resistance, abrasive resistance. The guide rail passed the European standard SGS 80000 cycle movement test.

The bottom is covered by non-slip mat, preventing the items from colliding. and is convenient to clean at the same time.





ITEM NO.	DESCRIPTION	Cabinet outside width (3/4"board)		Cabinet outside width (5/8"board)		SPECIFICATION	APPLICABLE WIDTH
		INCH	MM	INCH	MM		
3189005	Highclass Grey ●	35 7/16	900	35 1/4	896	(864-868)x471x162 mm	900 mm

Pull-out Seasoning Basket with Slidable Drawer



The pull-out basket efficiently organizes bottles, condiments, and other daily items in a base cabinet. Constructed from rust and abrasion-resistant aluminum with SGS-certified rails. A slim, non-slip design, sliding cutlery tray, and moveable spice rack enhance functionality and convenience.



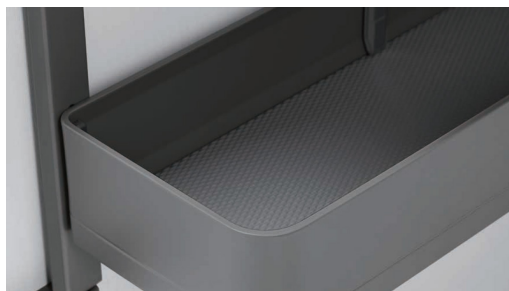
ITEM NO.	DESCRIPTION	Cabinet outside width (3/4"board)		Cabinet outside width (5/8"board)		SPECIFICATION	APPLICABLE WIDTH
		INCH	MM	INCH	MM		
3184001	Highclass Grey 	15 3/4	400	15 9/16	396	364x471x552 mm	400 mm
3184501	Highclass Grey 	17 11/16	450	17 9/16	446	414x471x552 mm	450 mm


Side Basket Attached Door Under Sink



Suitable for storing bottles, cleaning tools, pads, etc. It is equipped with a push-pull box and a reasonable layout to maximize the use of space to meet all your storage needs.

The assembly of components is perfect and meticulous, the overall structure is stable, easy to install; Bottom is covered vandyck brown leather, paired with highclass grey metal frame.



ITEM NO.	DESCRIPTION	Cabinet outside width (3/4"board)		Cabinet outside width (5/8"board)		SPECIFICATION	APPLICABLE WIDTH
		INCH	MM	INCH	MM		
3182006	Highclass Grey 	17 11/16	450	17 9/16	446	382x176x530 mm	450 mm

Double Layer Lifter



Liftable design, make the best use of higher space. Humanized design, adjust pull and resilience force according to loading weight, make the usage more safe and comfortable.

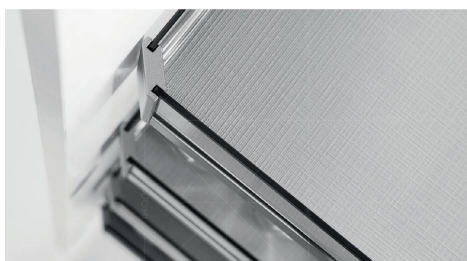


ITEM NO.	DESCRIPTION	Cabinet outside width (3/4"board)		Cabinet outside width (5/8"board)		SPECIFICATION	APPLICABLE WIDTH
		INCH	MM	INCH	MM		
4186005	Highclass Grey	23 5/8	600	23 7/16	596	564 x 294 x 452 mm	600 mm
4188005	Highclass Grey	31 1/2	800	31 5/16	796	764 x 294 x 452 mm	800 mm

Revolving Tall Unit



The unique linked design allows all the baskets to be pulled out at the same time when the door is opened, making it convenient for storing items. The silent design ensures the product remains steady and smooth during the opening and closing process. The double rail design improves upon the previous single rail model, ensuring smooth and steady movement when pulled out.



ITEM	ITEM NO.	DESCRIPTION	Cabinet outside width (3/4"board)		Cabinet outside width (5/8"board)		SPECIFICATION	APPLICABLE WIDTH
			INCH	MM	INCH	MM		
FRAME	2010003B	180 revolving	15 3/4	400	15 9/16	396	350x460x(1780-2080) mm	400 mm
BASKET	2010076A	180 revolving	15 3/4	400	15 9/16	396	350x460x(1780-2080) mm	400 mm
SLIDE	2010008B	180 revolving	15 3/4	400	15 9/16	396	350x460x(1780-2080) mm	400 mm

Waste Container

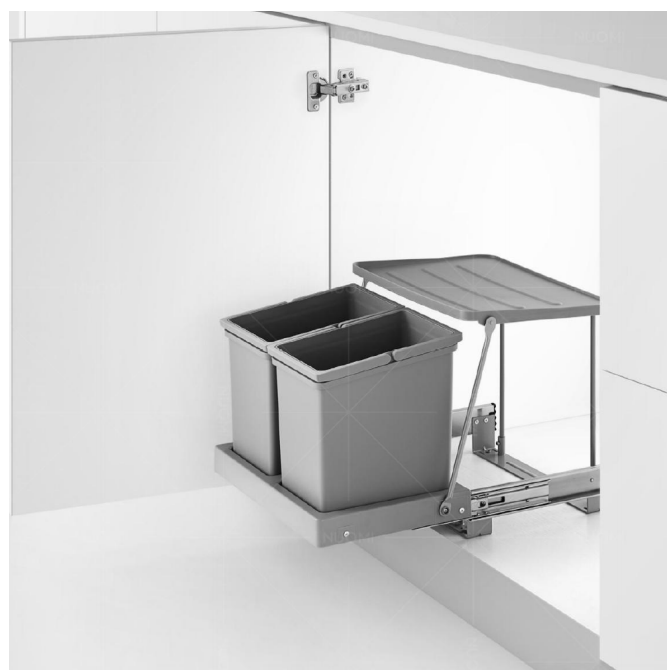


Dark Grey plastic waste container, adjustable sizing that can conveniently fit in the cabinet.

ITEM NO.	DESCRIPTION	Cabinet outside width (3/4"board)		Cabinet outside width (5/8"board)		SPECIFICATION	APPLICABLE WIDTH
		INCH	MM	INCH	MM		
3090003	Dark Grey (Without Door Panel)	11 13/16	300	11 5/8	296	250x455x355mm	300 mm
3090004	Dark Grey (With Door Panel)	11 13/16	300	11 5/8	296	250x455x355mm	300 mm

Waste Container Under Sink

Grey plastic waste container, adjustable sizing that can conveniently fit in the cabinet.



ITEM NO.	DESCRIPTION	SPECIFICATION
3090006	Grey	370x270x320 mm

NUOMI

CONTACT US

DYK HARDWARE LTD

2631 Viking Way Unit 138, Richmond, BC, V6V 3B5 Canada

mike@dykhardware.com

778-223-6810

www.nuomicanada.com

N51 LIVING LTD

4535 104 Ave SE, Calgary, AB, T2C 5C6 Canada

sales@n51living.com

403-768-2370

